

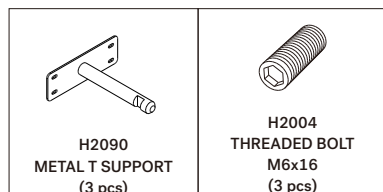
Ethnicraft

OAK WALL SHELF - 210

ASSEMBLY INSTRUCTIONS FOR WALL SHELF INSTALLATION

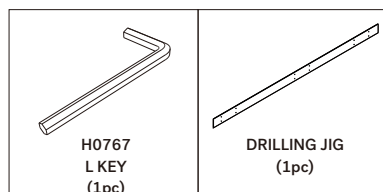
HARDWARE ENCLOSED

(Included in package)



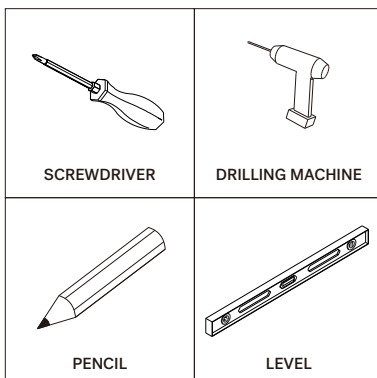
TOOLS

(Included in package)



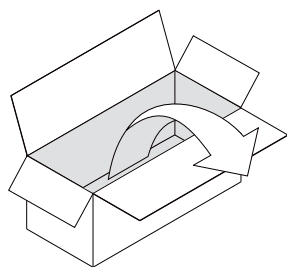
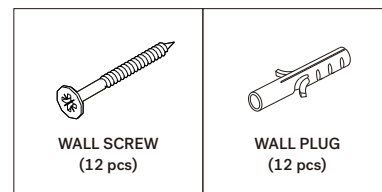
TOOLS

(Not included in package)



HARDWARE

(Not included in package)

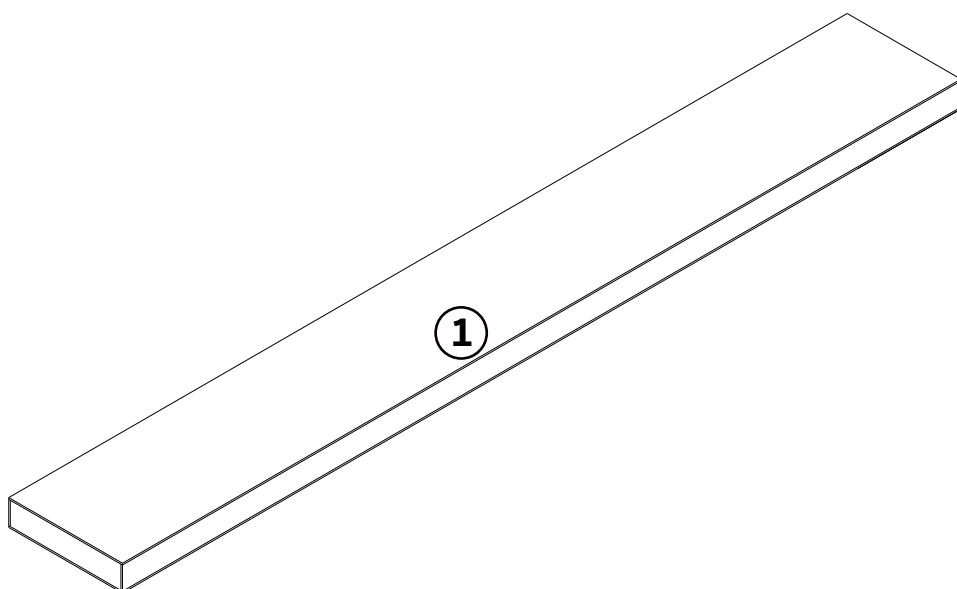


IN YOUR PACKAGE :

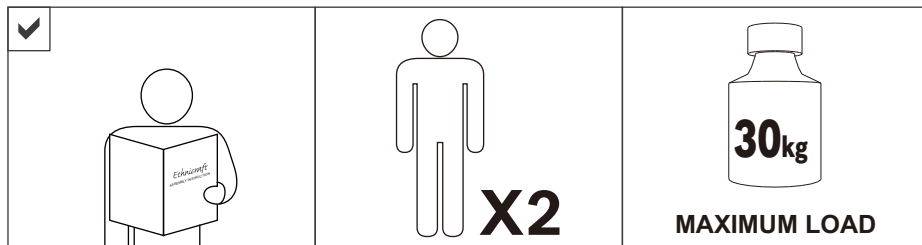
ASSEMBLY INSTRUCTION
HARDWARE (AS LISTED ABOVE)

ITEM TO BE INSTALLED

1. WALL SHELF 1 pc



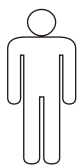
NOTICE



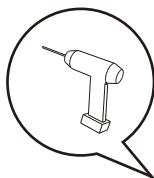
SYMBOLS



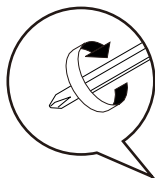
DIRECTION



NUMBER OF
PERSON NEEDED



USE
DRILLING MACHINE



USE SCREWDRIVER
TO TIGHTEN



USE L KEY
TO TIGHTEN

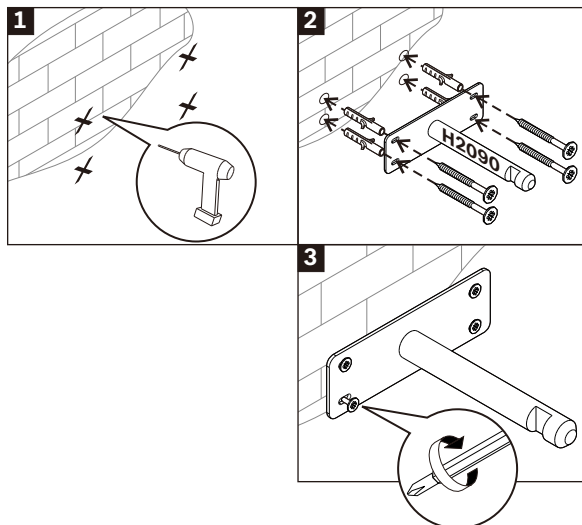
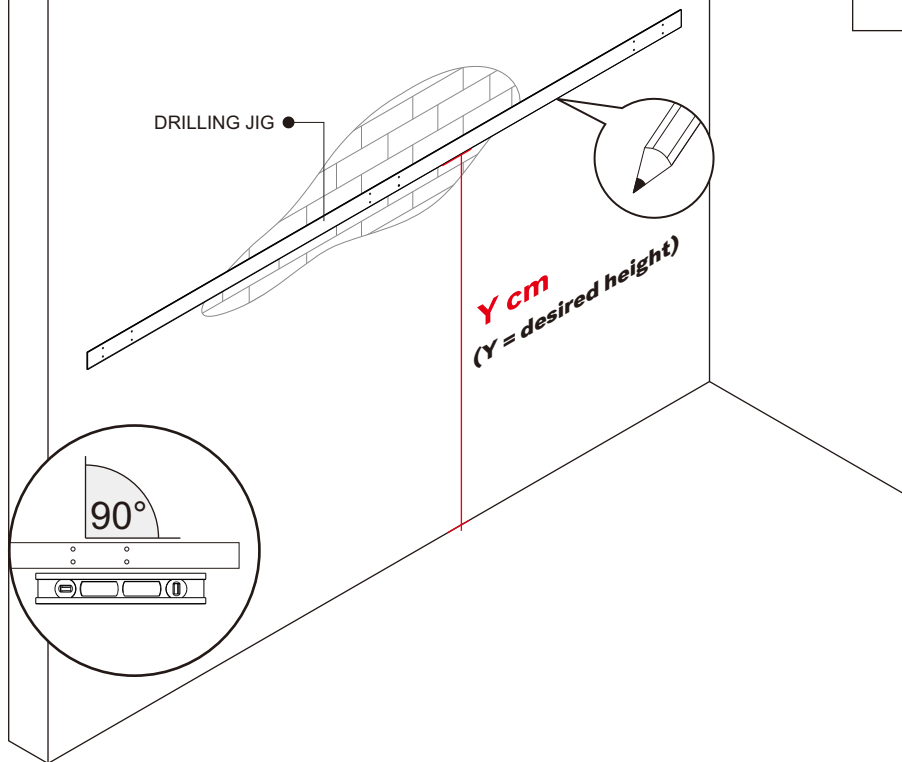


USE PENCIL

1 INSTALLING METAL T SUPPORTS

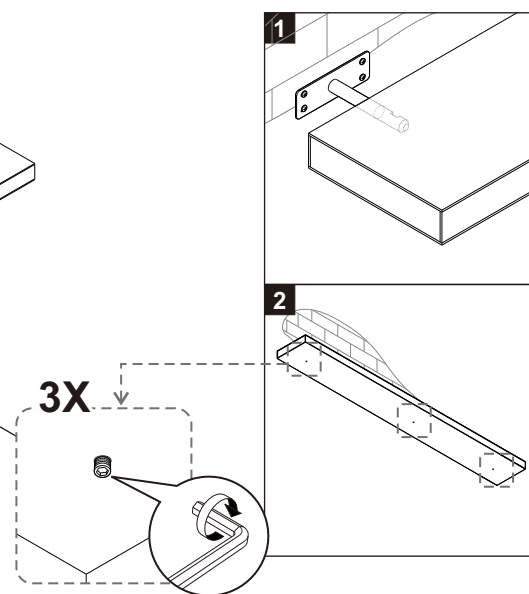
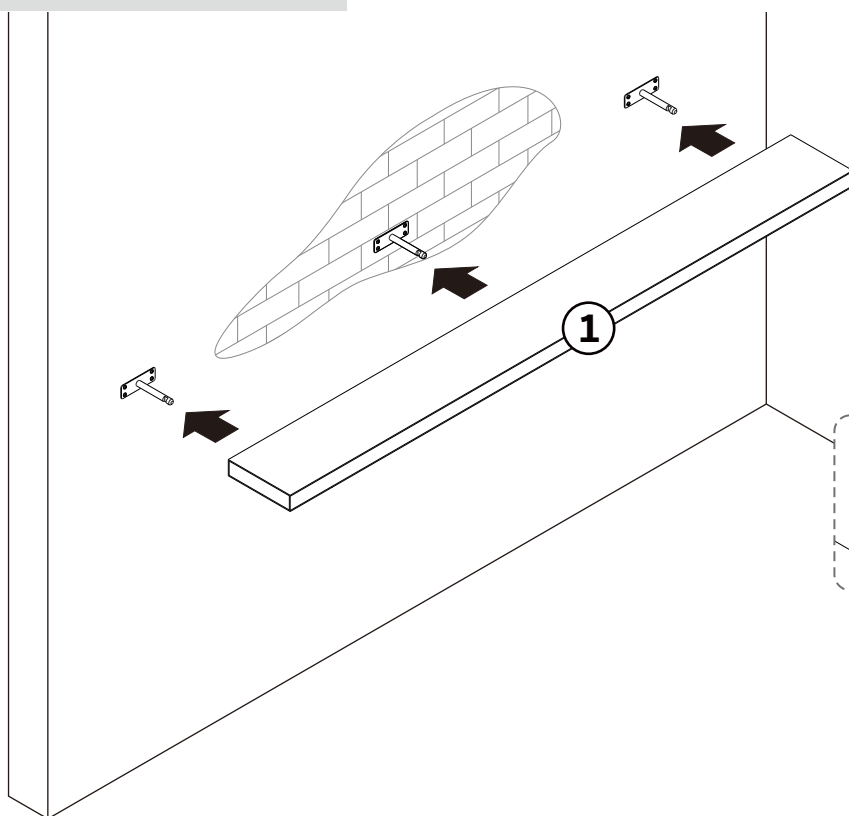


AS WALL MATERIALS VARY, SCREWS FOR FIXING TO WALL ARE NOT INCLUDED. FOR ADVICE ON SUITABLE SCREW SYSTEMS, CONTACT YOUR LOCAL SPECIALISED DEALER.



- ILLUSTRATION WITH BRICK WALL
- USE LEVEL FOR ALIGNMENT
- TIGHTEN FULLY

2 INSTALLING WALL SHELF



- INSTALLING THREADED BOLTS ON THE BOTTOM SIDE OF SHELF