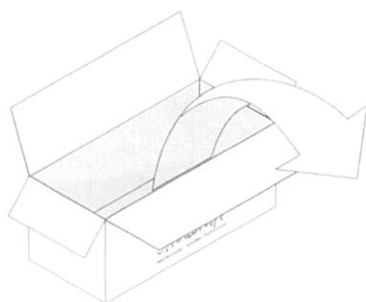


OAK MIKADO DINING TABLE ASSEMBLY INSTRUCTION FOR DINING TABLE INSTALLATION

HARDWARES

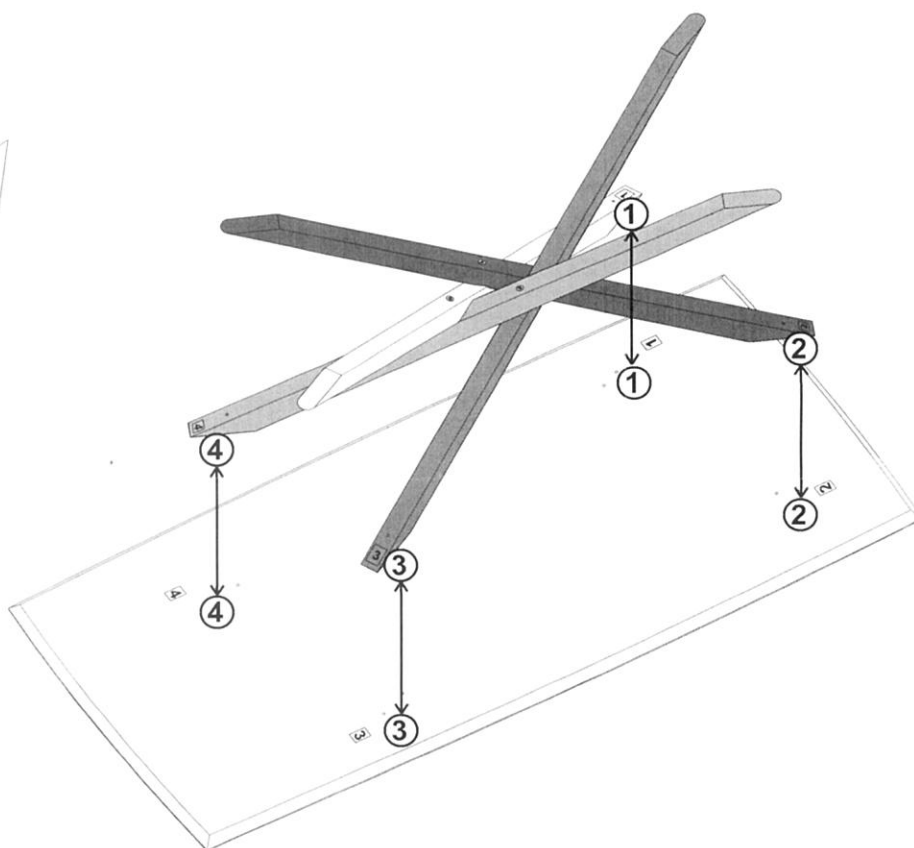


TOOLS

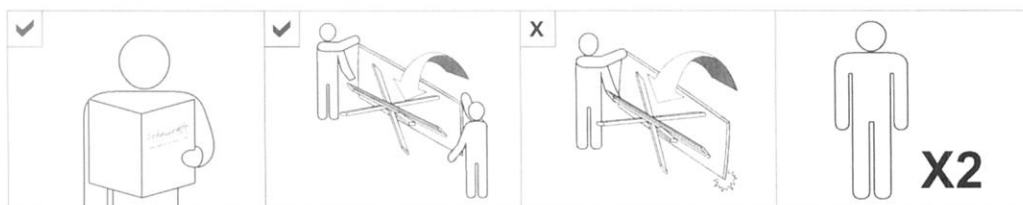


IN YOUR PACKAGE :
ASSEMBLY INSTRUCTION
HARDWARES (AS LISTED ABOVE)

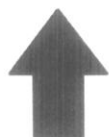
PARTS TO BE INSTALLED
1. TOP PANEL 1pc
2. LEGS 4 set



NOTICE



SYMBOLS



DIRECTION



NUMBER OF
PERSON NEEDED



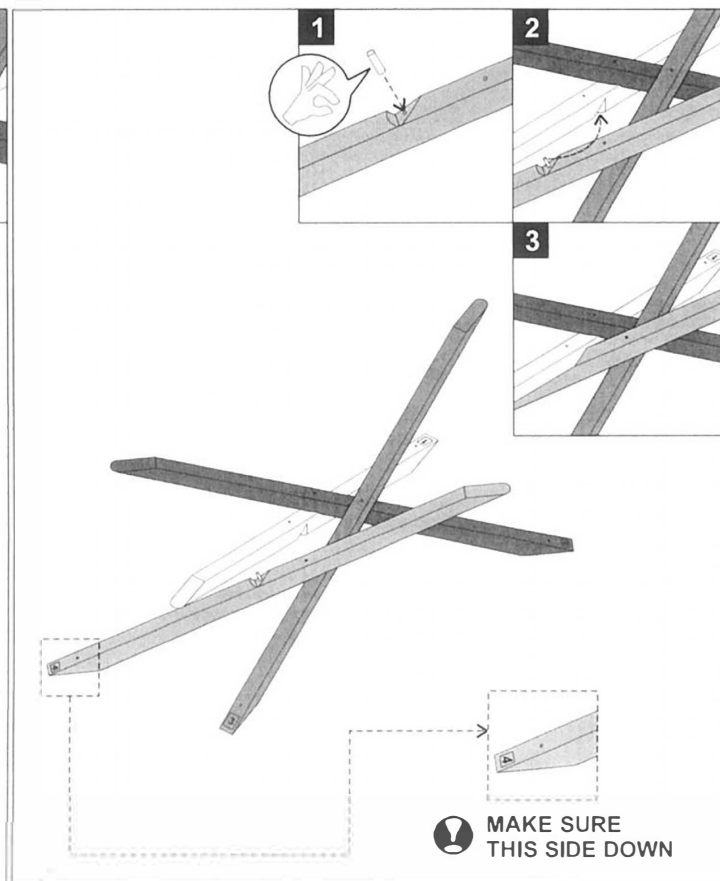
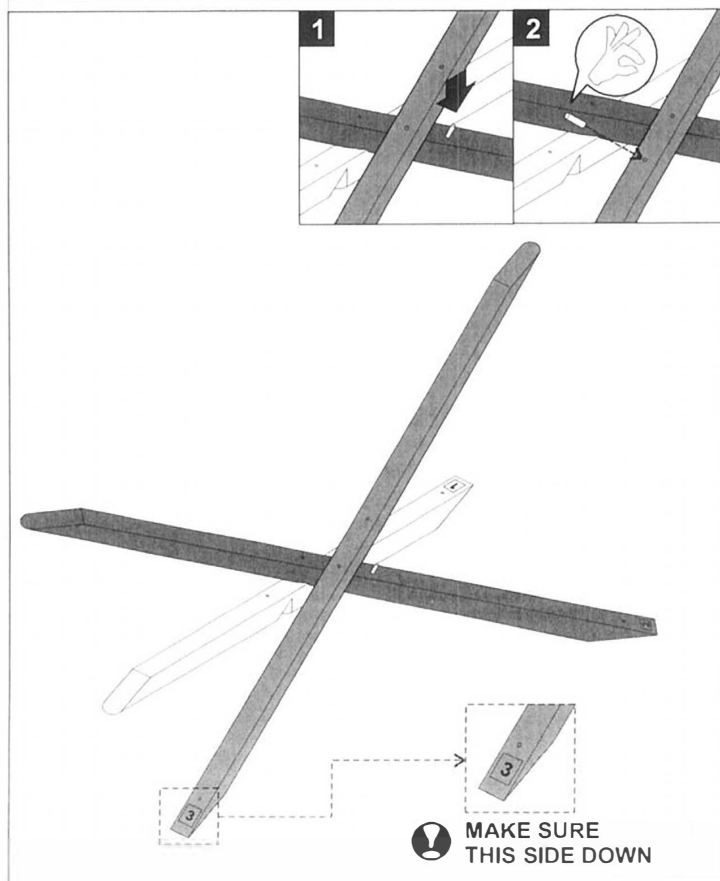
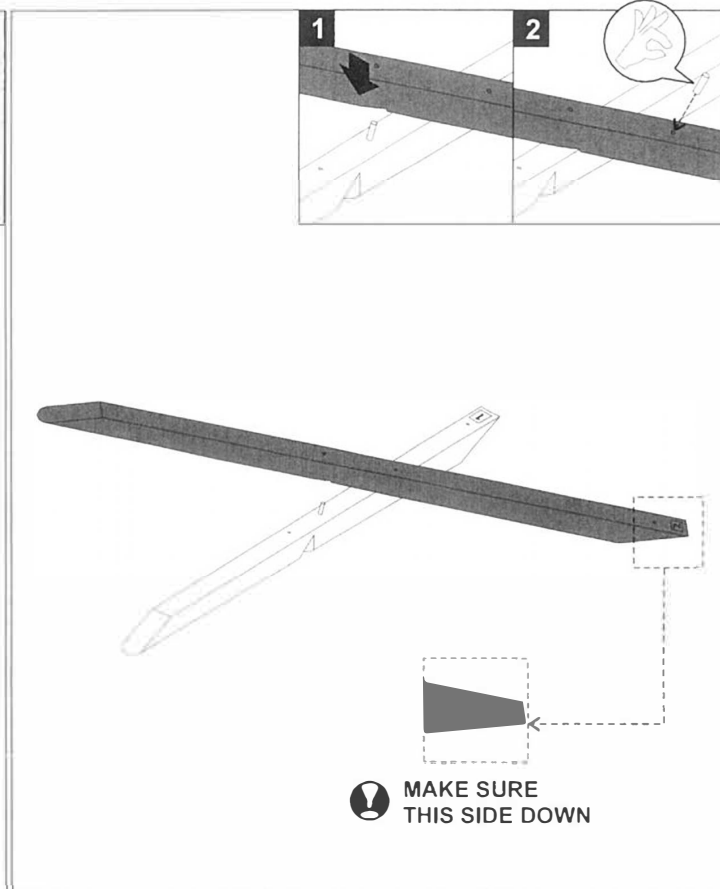
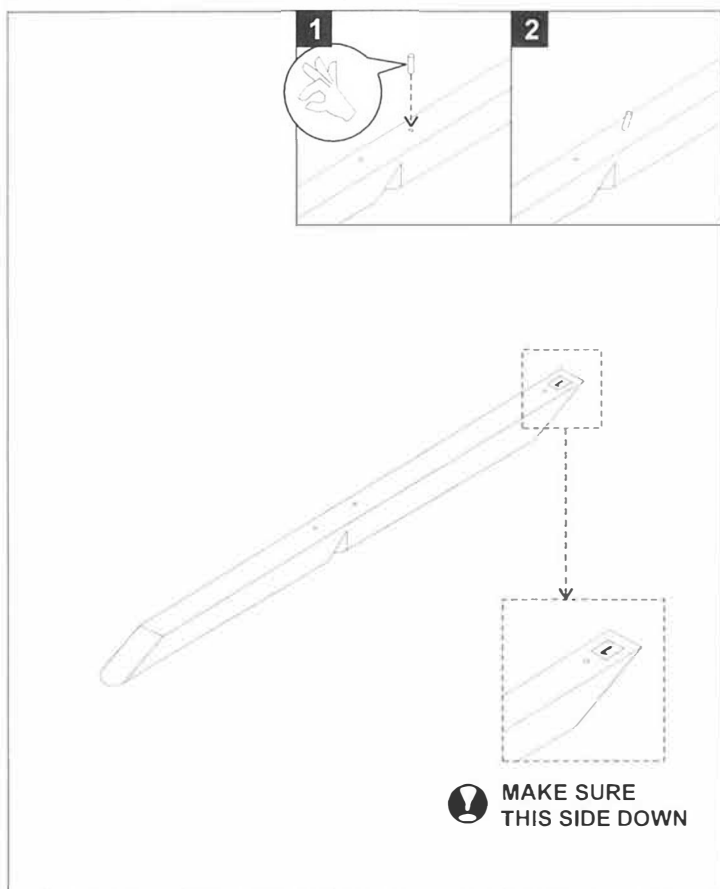
USE HAND



USE L KEY
TO TIGHTEN

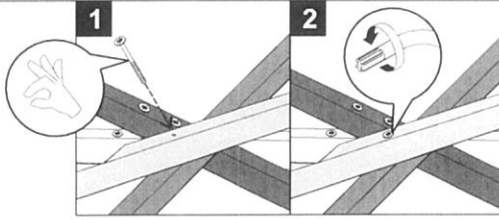
OAK MIKADO DINING TABLE ASSEMBLY INSTRUCTION FOR DINING TABLE INSTALLATION

A. ASSEMBLING THE LEGS

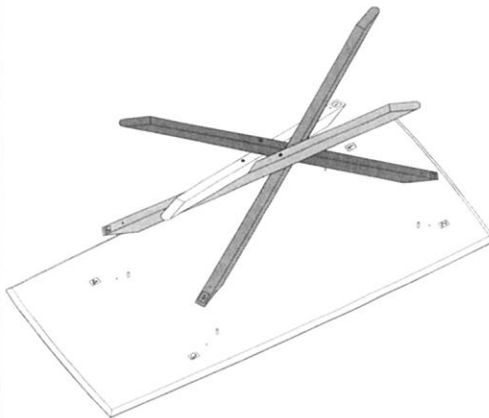
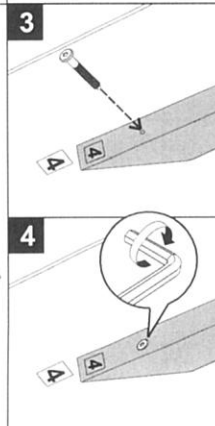
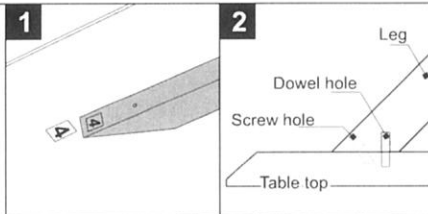
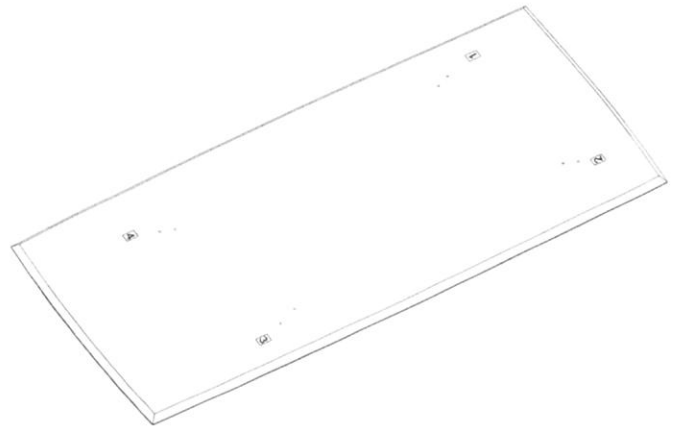
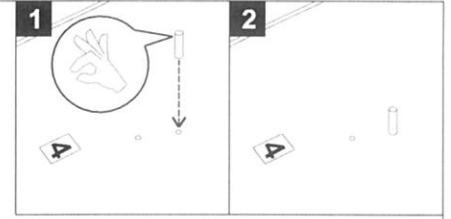
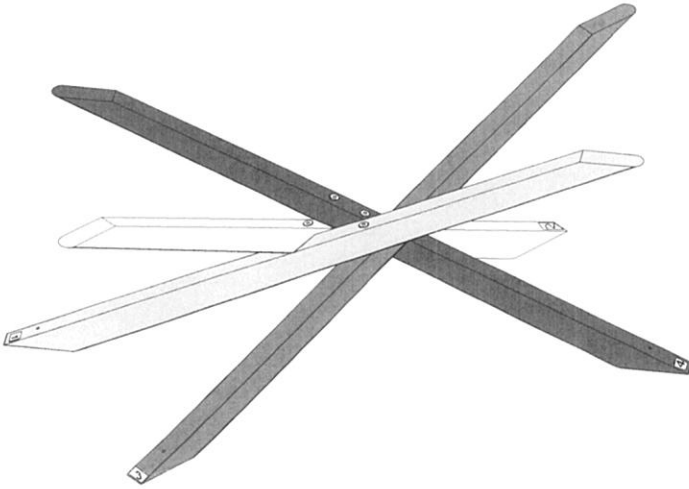


OAK MIKADO DINING TABLE ASSEMBLY INSTRUCTION FOR DINING TABLE INSTALLATION

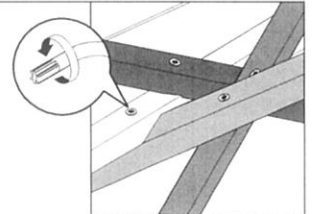
B. INSTALLING THE LEGS TO THE TOP PANEL



- ! - USE SPAX SCREW
- DO NOT FULLY TIGHTEN



- ! - USE JCBC SCREW
- TIGHTEN FULLY
- MAKE SURE THE NUMBERING AT THE LEGS AS WELL ON THE TABLE TOP IS CORRECT.



- ! - TIGHTEN FULLY
- 4 SPAX SCREWS

