

WARDROBES

[ITA] MONTAGGIO E REGOLAZIONE
[ENG] ASSEMBLY AND ADJUSTMENTS
[DEU] MONTAGE UND REGULIERUNG

**[ITA] Sistema di scorrimento
per ante sovrapposte con
ammortizzazione MAGNETICA**

**[ENG] Sliding system with
MAGNETIC silent damper
for overlapping doors**

**[DEU] Gleitsystem für
überlappende Türen mit
MAGNETISCHER Dämpfung**



bortoluzzi

NOVAMOBILI

EDIZIONE SETTEMBRE 2018

[ITA] INDICE

Messa in bolla del mobile	3
Preparazione delle ante.....	4
Montaggio dei binari sulla struttura	6
Montaggio delle ante	8
Aggancio dell'ammortizzatore	10
Aggancio errato dell'ammortizzatore ...	11
Montaggio del carter parapolvere	12
Regolazione verticale dell'anta	13
Regolazione orizzontale dell'anta	14
Rimozione dell'anta	15

[ENG] INDEX

Unit levelling	3
Preparation of the doors	4
Mounting the tracks on the cabinet	6
Mounting the doors	8
Fitting the damper	10
Fitting wrong the damper	11
Mounting the dust cover	12
Door vertical adjustment	13
Door horizontal adjustment	14
Removing door	15

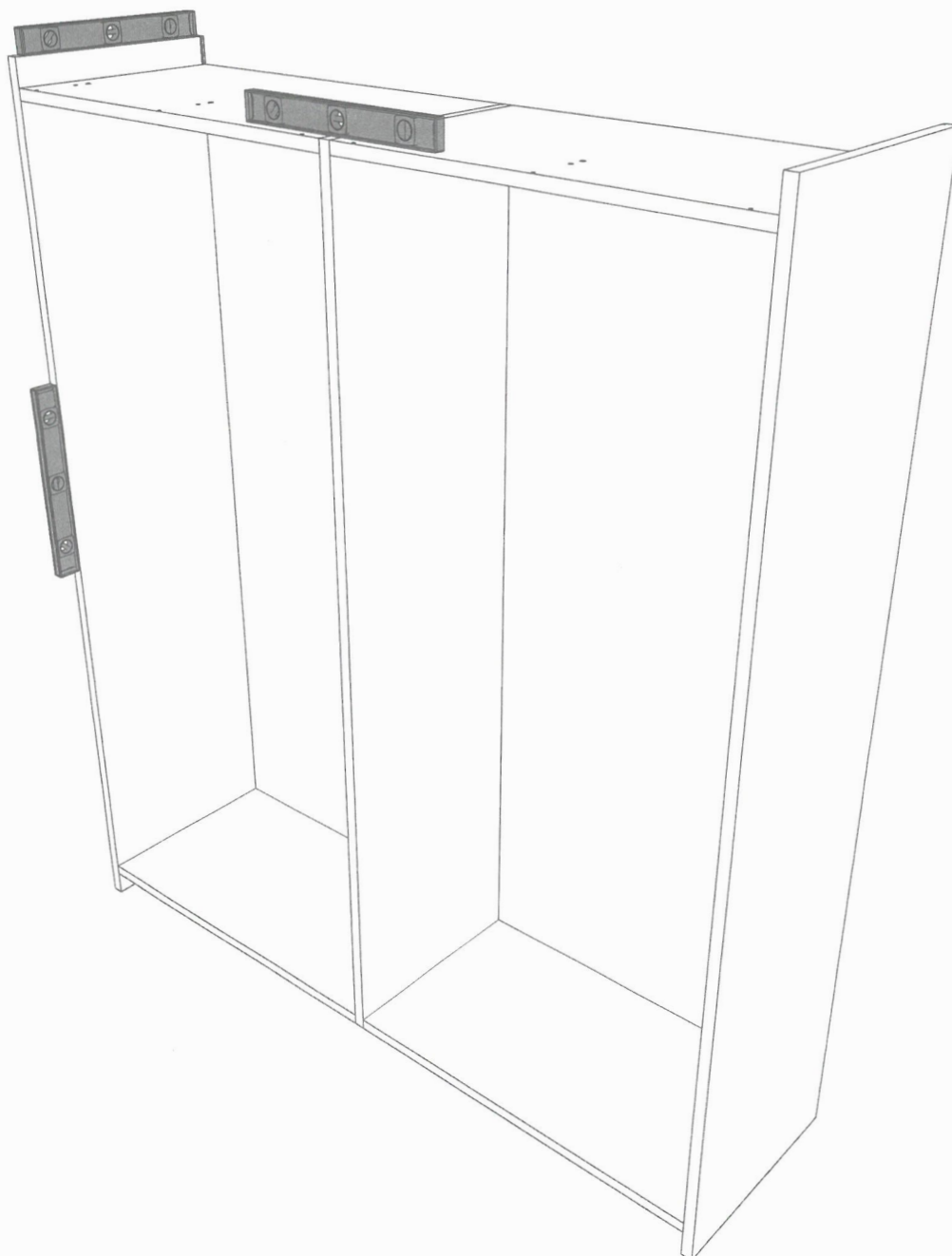
[DEU] INHALTSVERZEICHNIS

Möbel ausrichten	3
Vorbereitung der Türen	4
Montage der Schienen am Korpus	6
Montage der Türen	8
Einhängen des Dämpfers	10
Falsches Einhängen des Dämpfers	11
Montage der Staubschutzblende	12
Vertikale Regulierung der Tür	13
Horizontale Regulierung der Tür.....	14
Demontage der Tür	15

[ITA] **MESSA IN BOLLA DEL MOBILE**

[ENG] **UNIT LEVELLING**

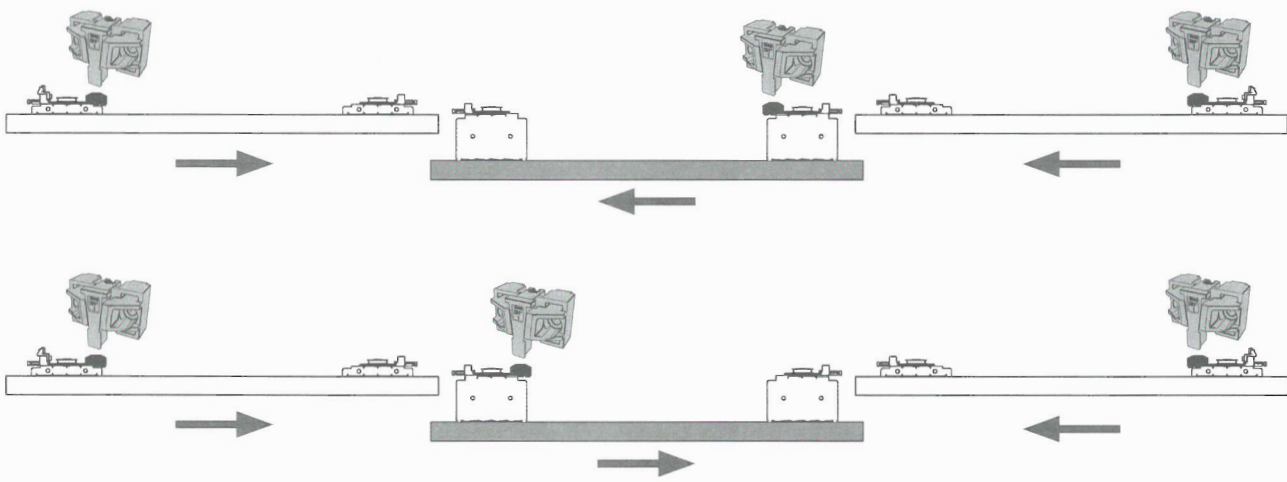
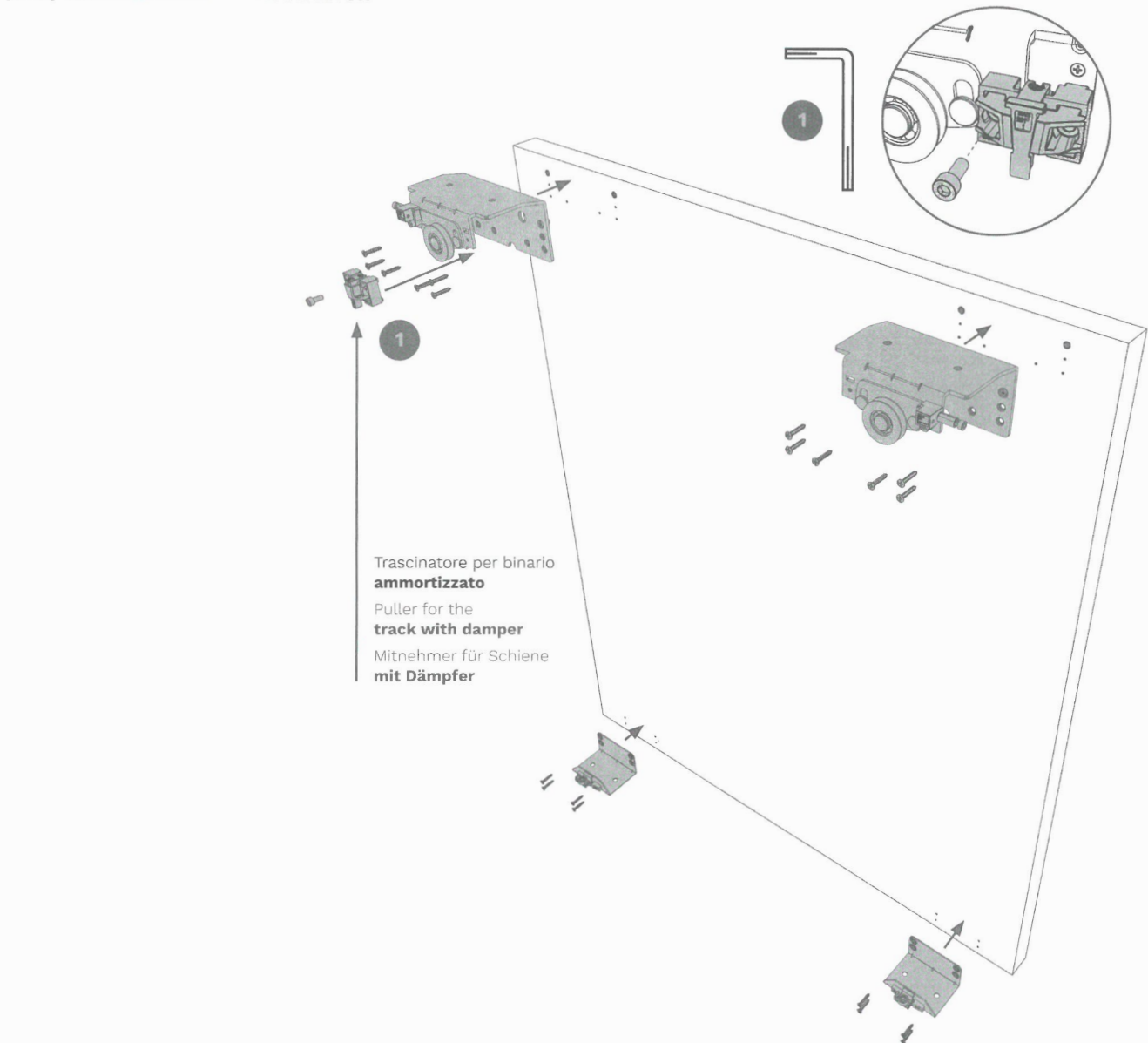
[DEU] **MÖBEL AUSRICHTEN**



[ITA] PREPARAZIONE DELL'ANTA ESTERNA

[ENG] PREPARATION OF THE EXTERNAL DOOR

[DEU] VORBEREITUNG DER AUSSENTÜR



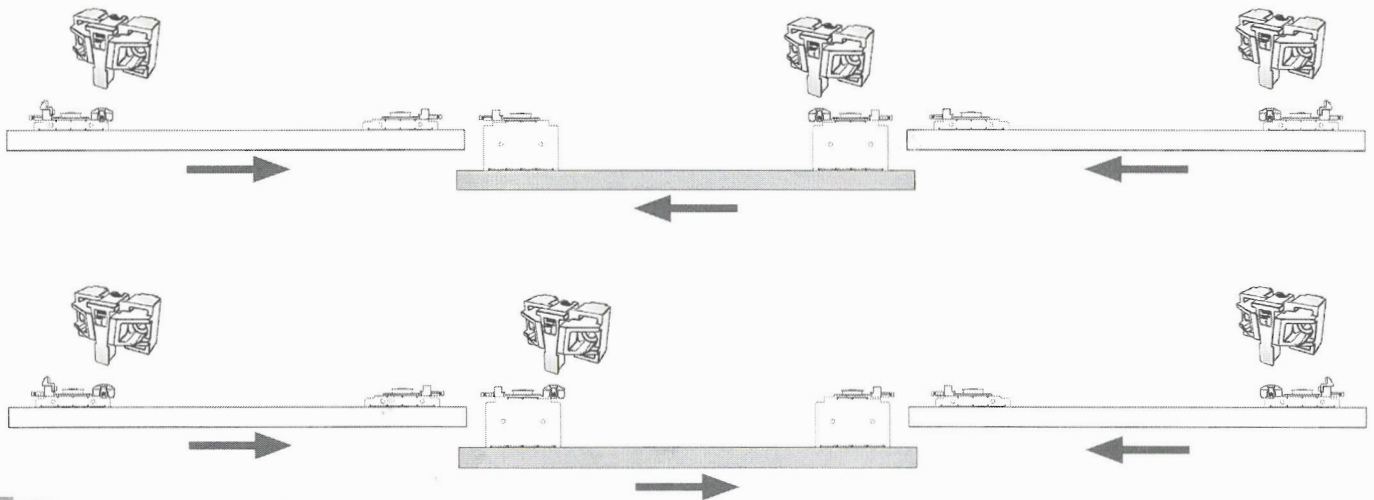
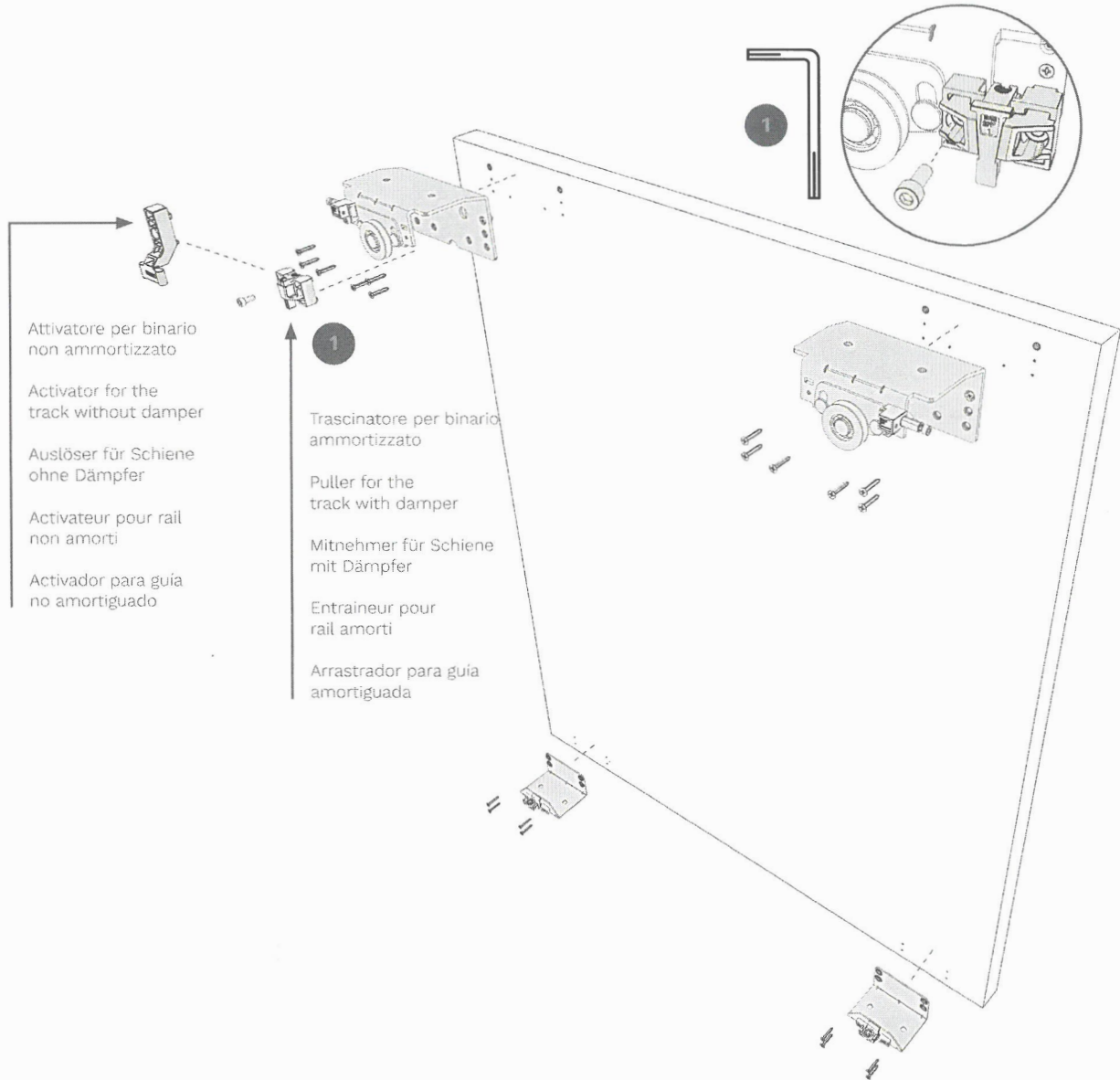
[ITA] **PREPARAZIONE DELL'ANTA ESTERNA**

[ENG] **PREPARATION OF THE EXTERNAL DOOR**

[FRA] **PRÉPARATION DES PORTES EXTERNES**

[DEU] **VORBEREITUNG DER AUSSENTÜR**

[ESP] **PREPARACIÓN DE LA PUERTA EXTERNA**



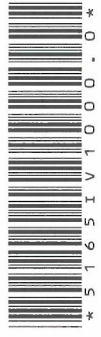
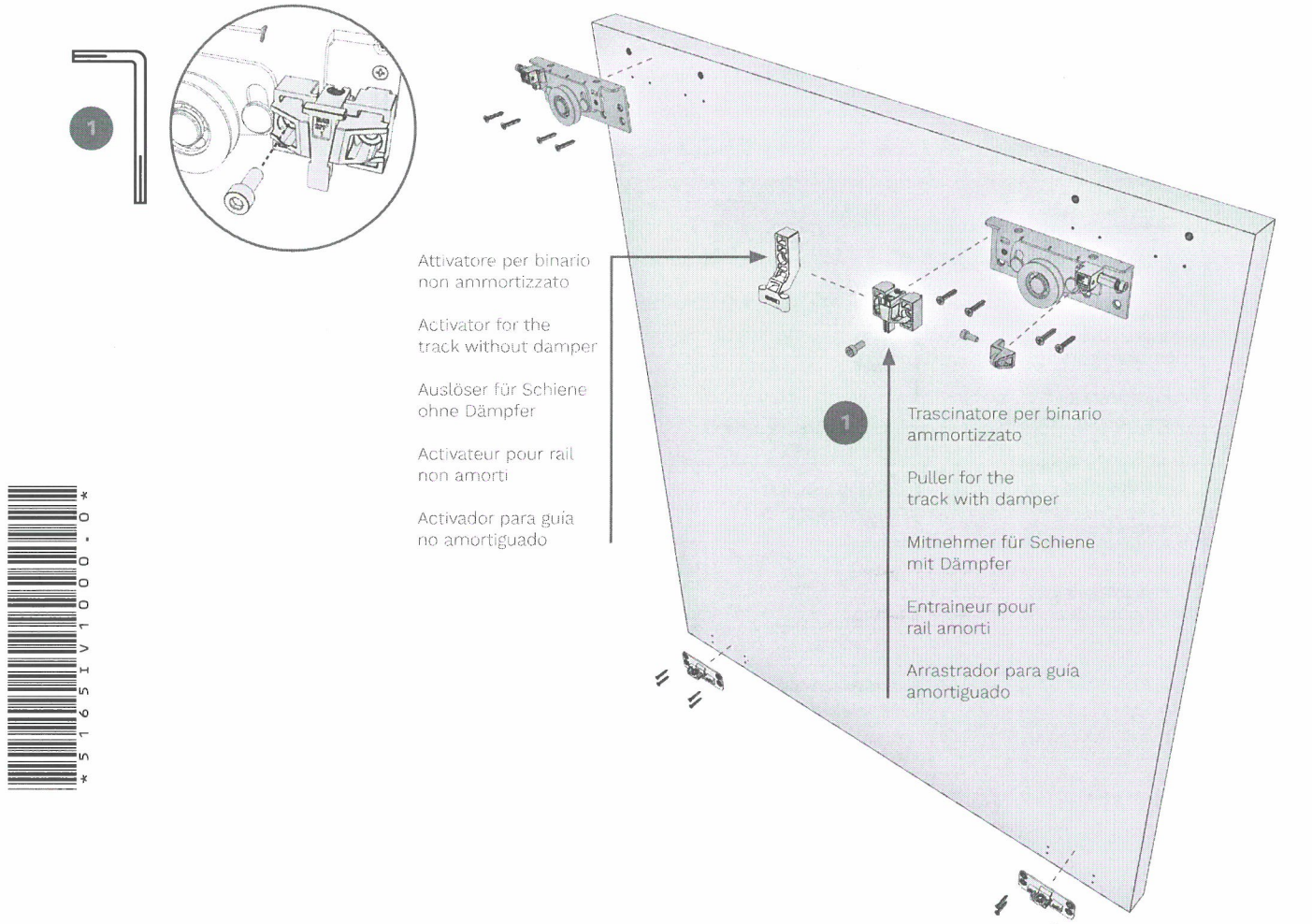
[ITA] PREPARAZIONE
DELL'ANTA INTERNA

[ENG] PREPARATION OF
THE INTERNAL DOOR

[FRA] PRÉPARATION DES
PORTES INTERNES

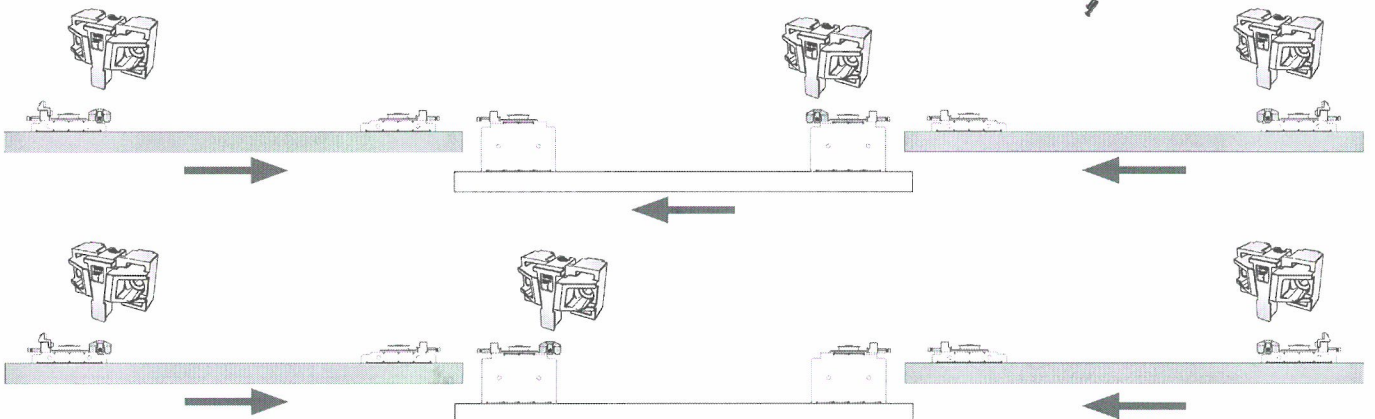
[DEU] VORBEREITUNG DER
INNENTÜR

[ESP] PREPARACIÓN DE LA
PUERTA INTERNA

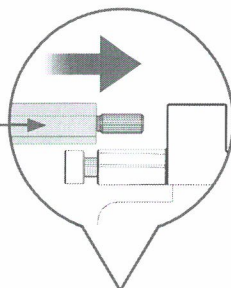


Attivatore per binario
non ammortizzato
Activator for the
track without damper
Auslöser für Schiene
ohne Dämpfer
Activateur pour rail
non amorti
Activador para guía
no amortiguado

Trascinatore per binario
ammortizzato
Puller for the
track with damper
Mitnehmer für Schiene
mit Dämpfer
Entraineur pour
rail amorti
Arrastrador para guía
amortiguado



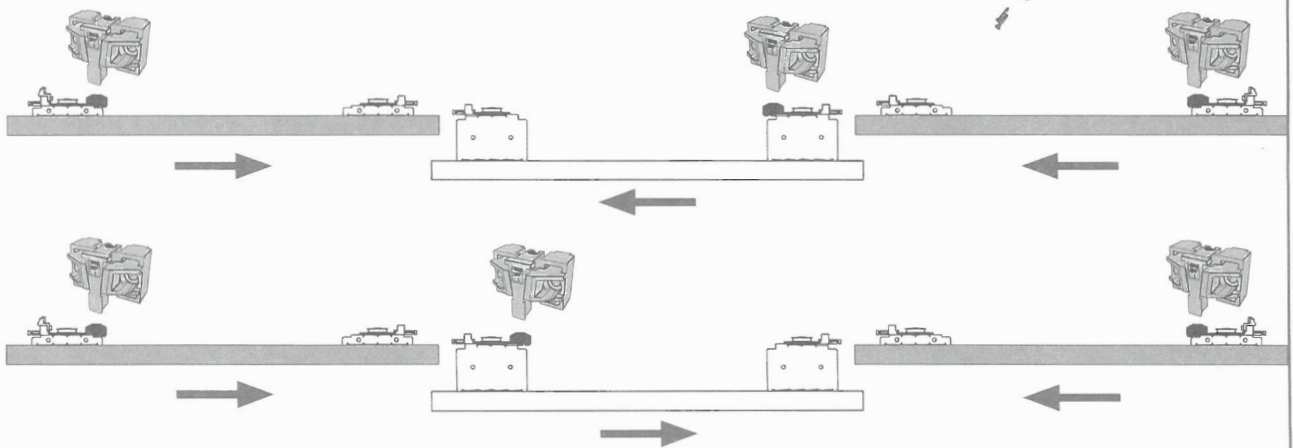
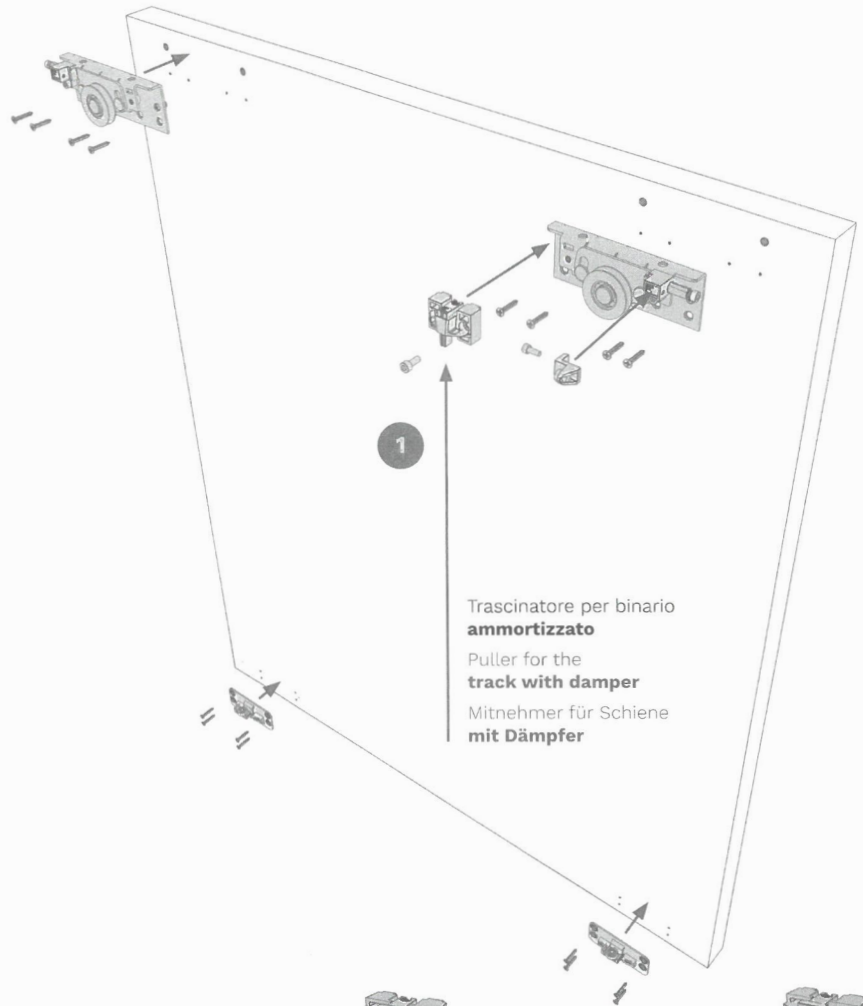
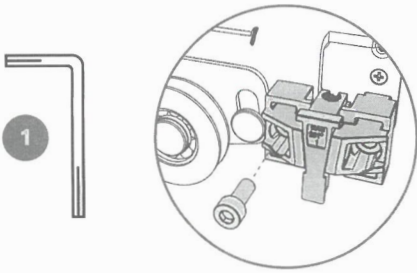
Perno anticollisione
Anti-collision pin
Aufprallschutz-Stift
Tige anticollision
Pasador anti-collision



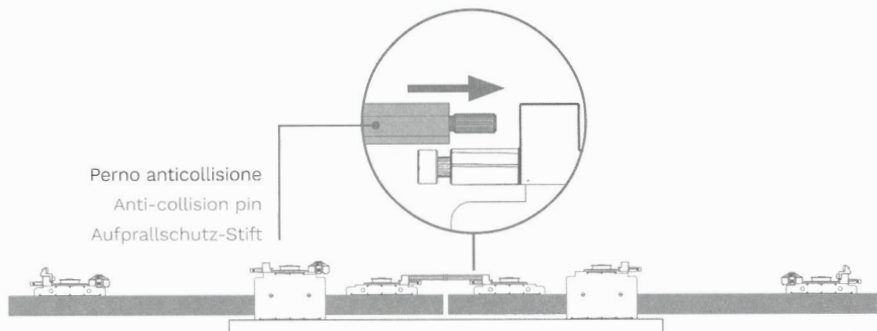
[ITA] PREPARAZIONE DELL'ANTA INTERNA

[ENG] PREPARATION OF THE INTERNAL DOOR

[DEU] VORBEREITUNG DER INNENTÜREN



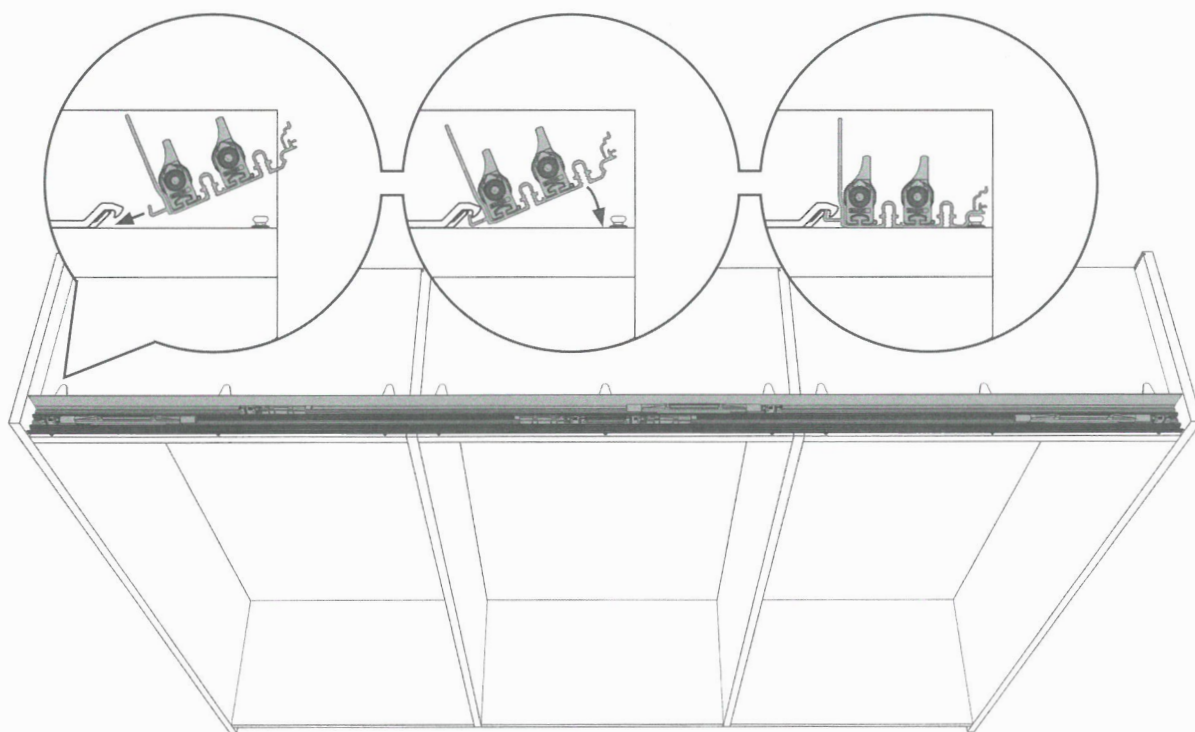
Perno anticollisione
Anti-collision pin
Aufprallschutz-Stift



[ITA] MONTAGGIO DEI BINARI SULLA
STRUTTURA (FISSAGGIO KLIK)

[ENG] MOUNTING THE TRACKS ON THE
CABINET (KLIK FIXING)

[DEU] MONTAGE DER SCHIENEN AM
KORPUS (KLIK-BEFESTIGUNG)

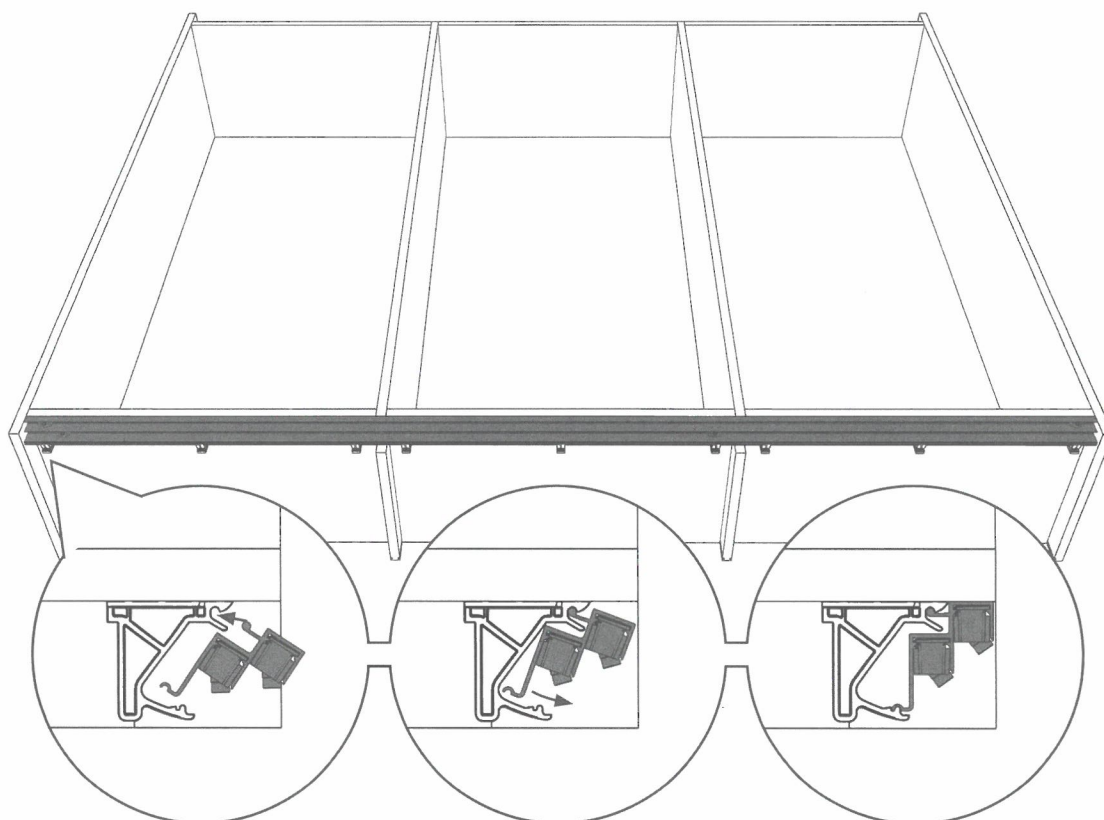


[ITA] MONTAGGIO DEI BINARI SULLA
STRUTTURA (FISSAGGIO KLIK)

[ENG] MOUNTING THE TRACKS ON THE
CABINET (KLIK FIXING)

[DEU] MONTAGE DER SCHIENEN AM
KORPUS (KLIK-BEFESTIGUNG)

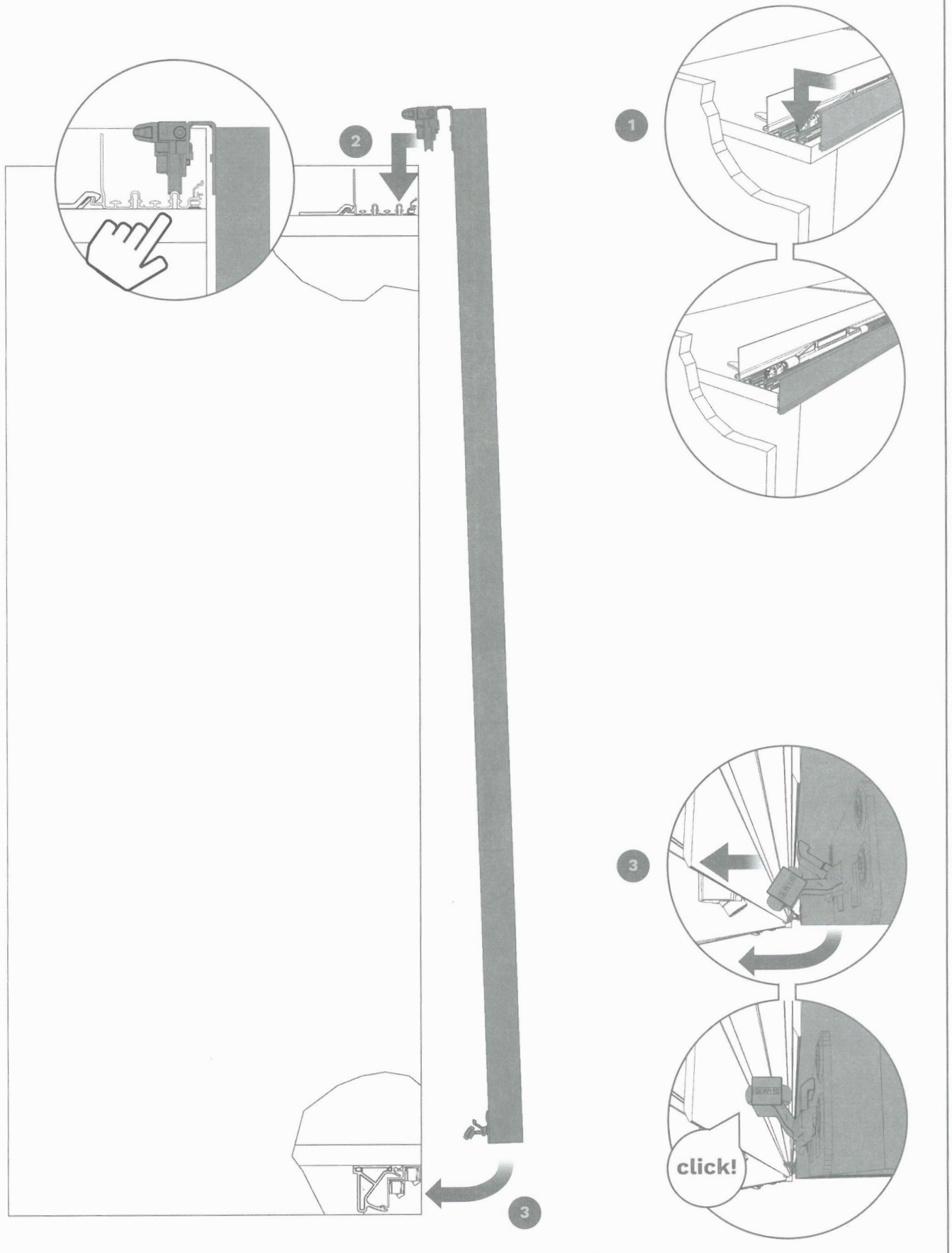
klik



[ITA] MONTAGGIO DELLE ANTE INTERNE

[ENG] MOUNTING THE INTERNAL DOOR

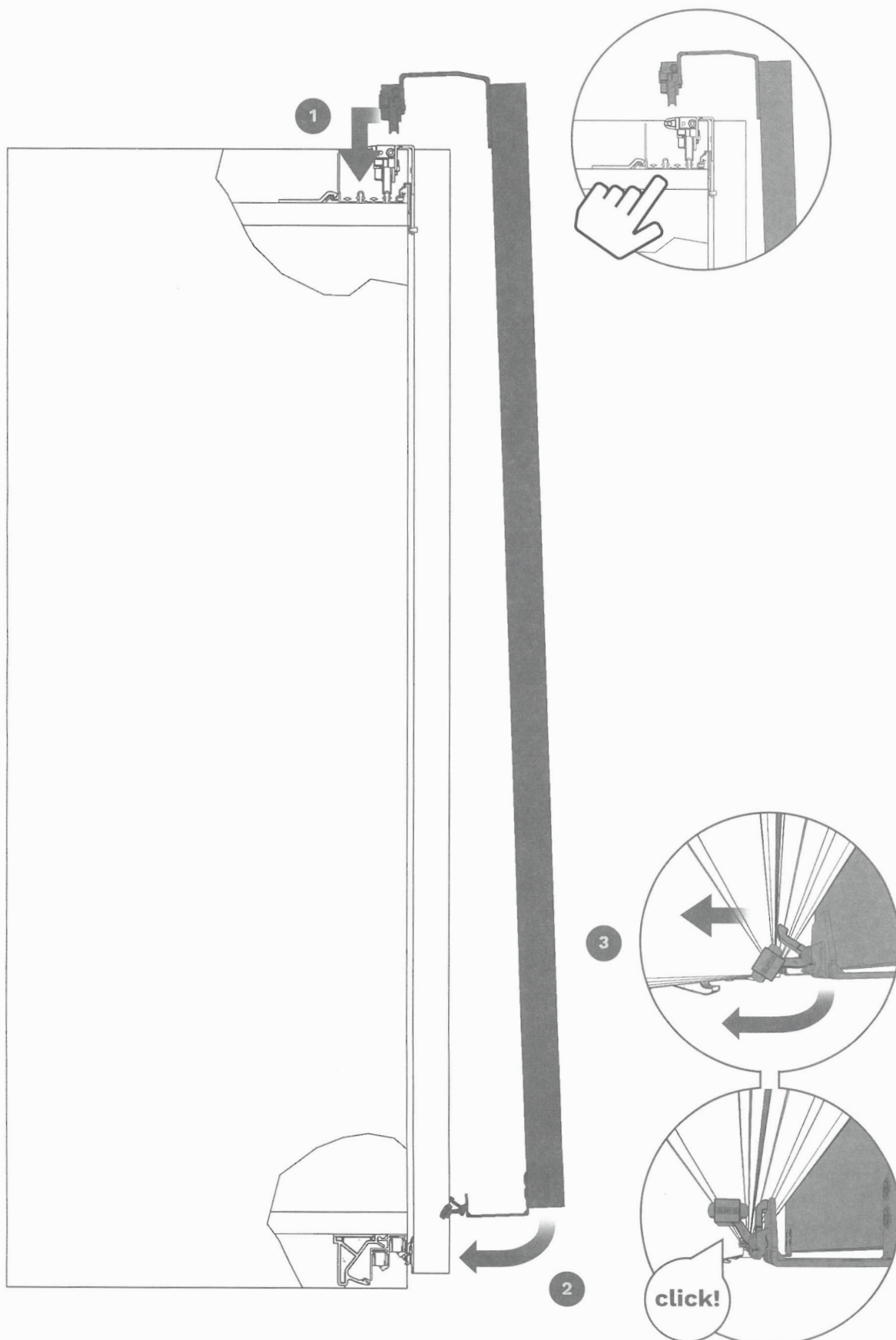
[DEU] MONTAGE DER INNENTÜREN



[ITA] MONTAGGIO DELL'ANTA ESTERNA

[ENG] MOUNTING THE EXTERNAL DOOR

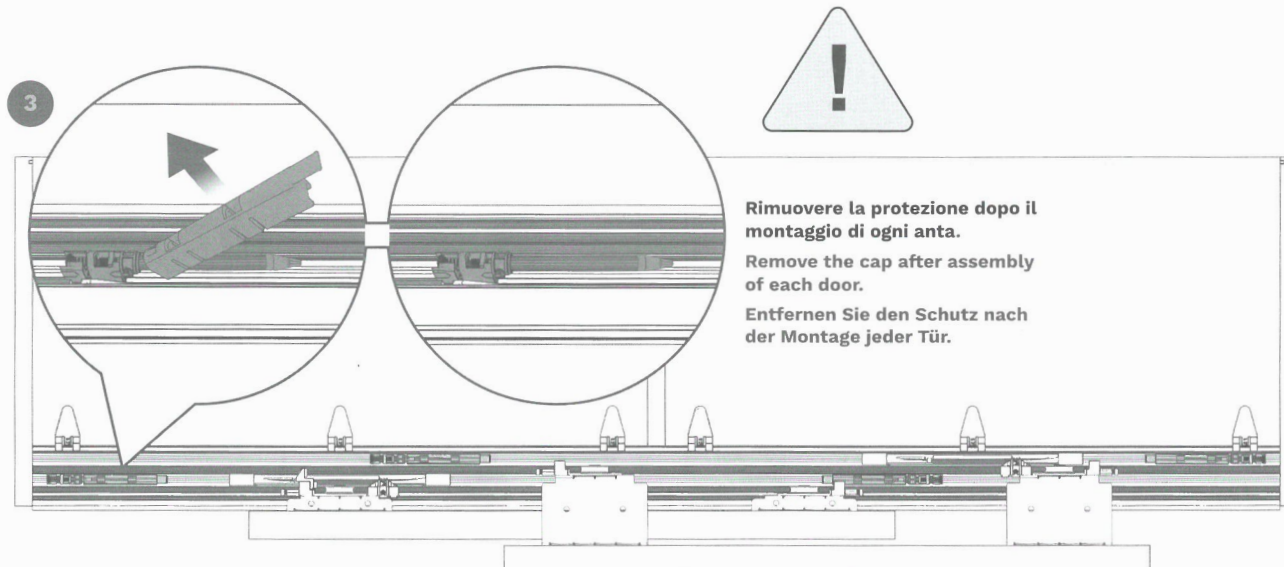
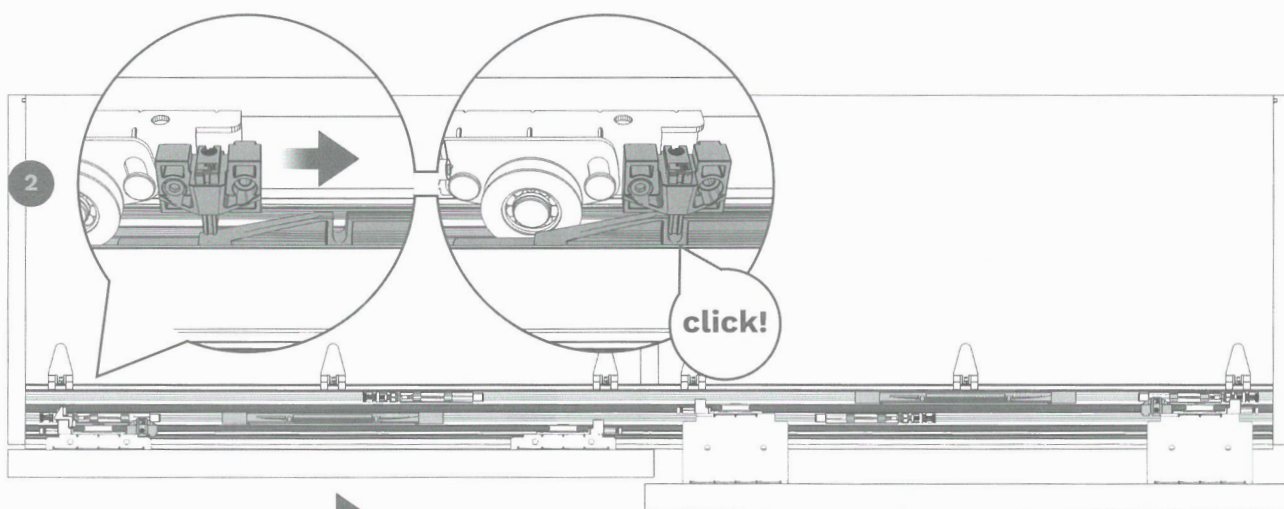
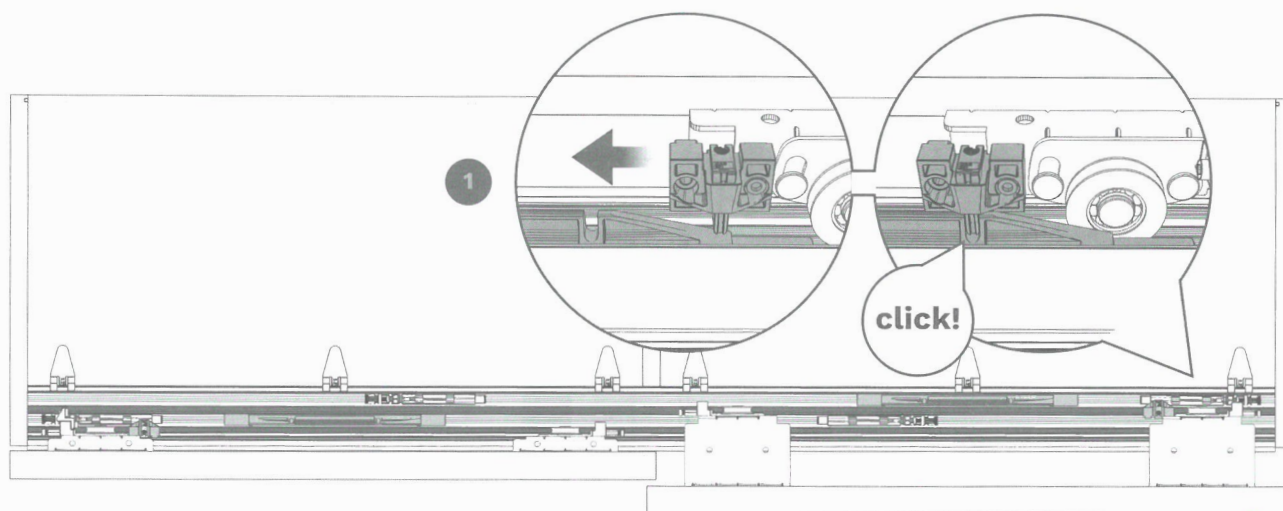
[DEU] MONTAGE DER AUSSENTÜR



[ITA] AGGANCIAMENTO DELL'AMMORTIZZATORE

[ENG] FITTING THE DAMPER

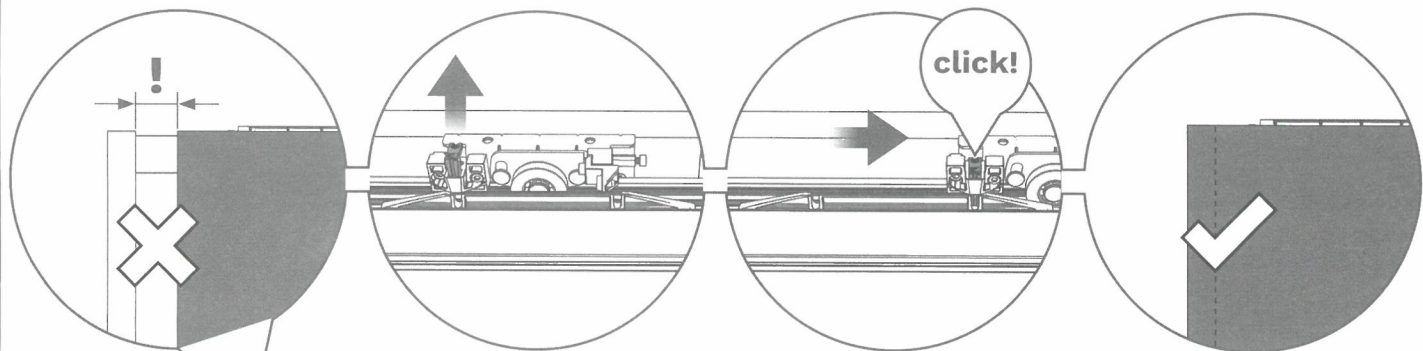
[DEU] EINHÄNGEN DES DÄMPFERS



[ITA] **AGGANCIO ERRATO DELL'AMMORTIZZATORE**

[ENG] **FITTING WRONG THE DAMPER**

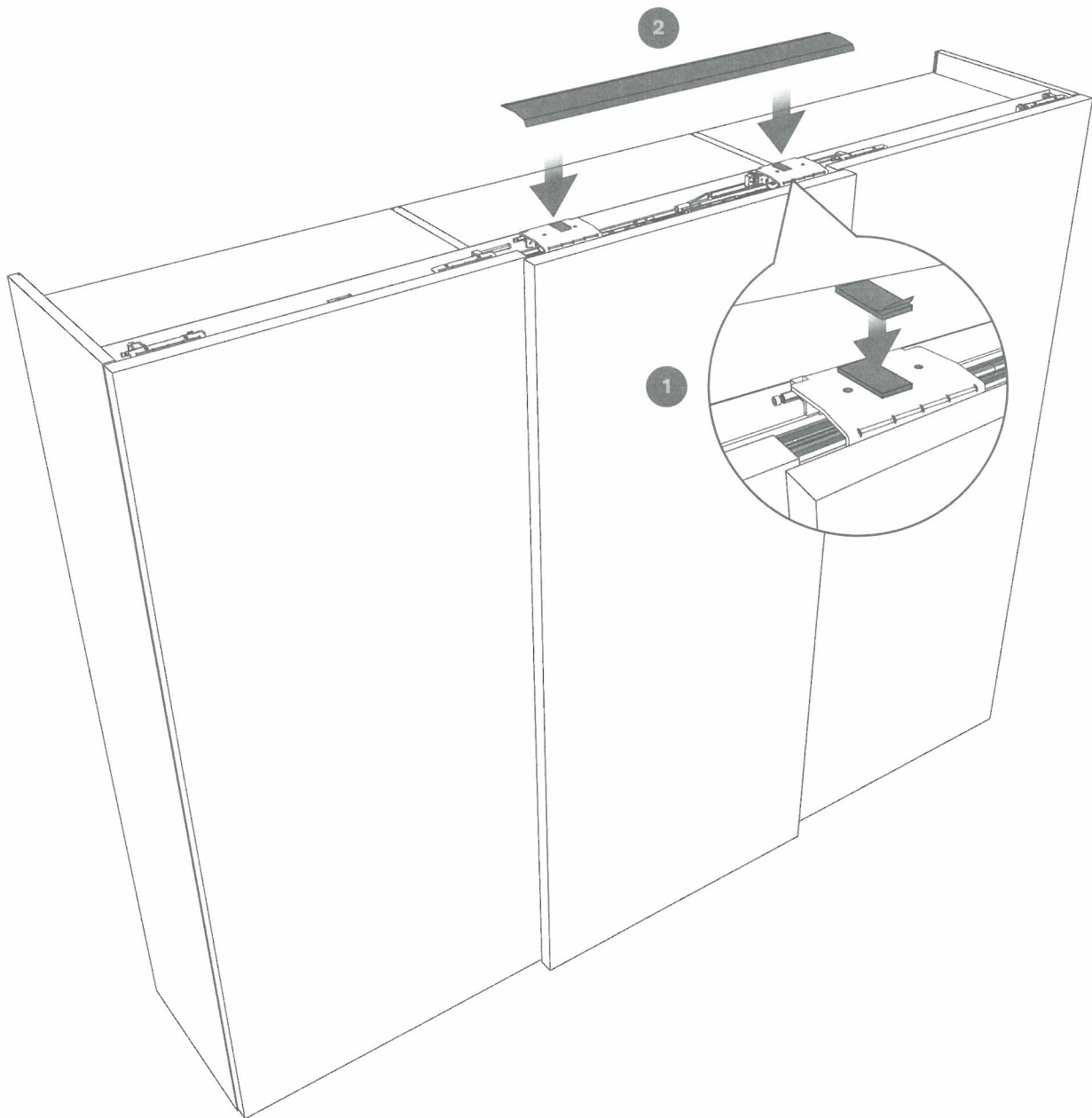
[DEU] **FALSCHES EINHÄNGEN
DES DÄMPFERS**



[ITA] MONTAGGIO DEL CARTER PARAPOLVERE

[ENG] MOUNTING THE DUST COVER

[DEU] MONTAGE DER STAUBSCHUTZBLENDE

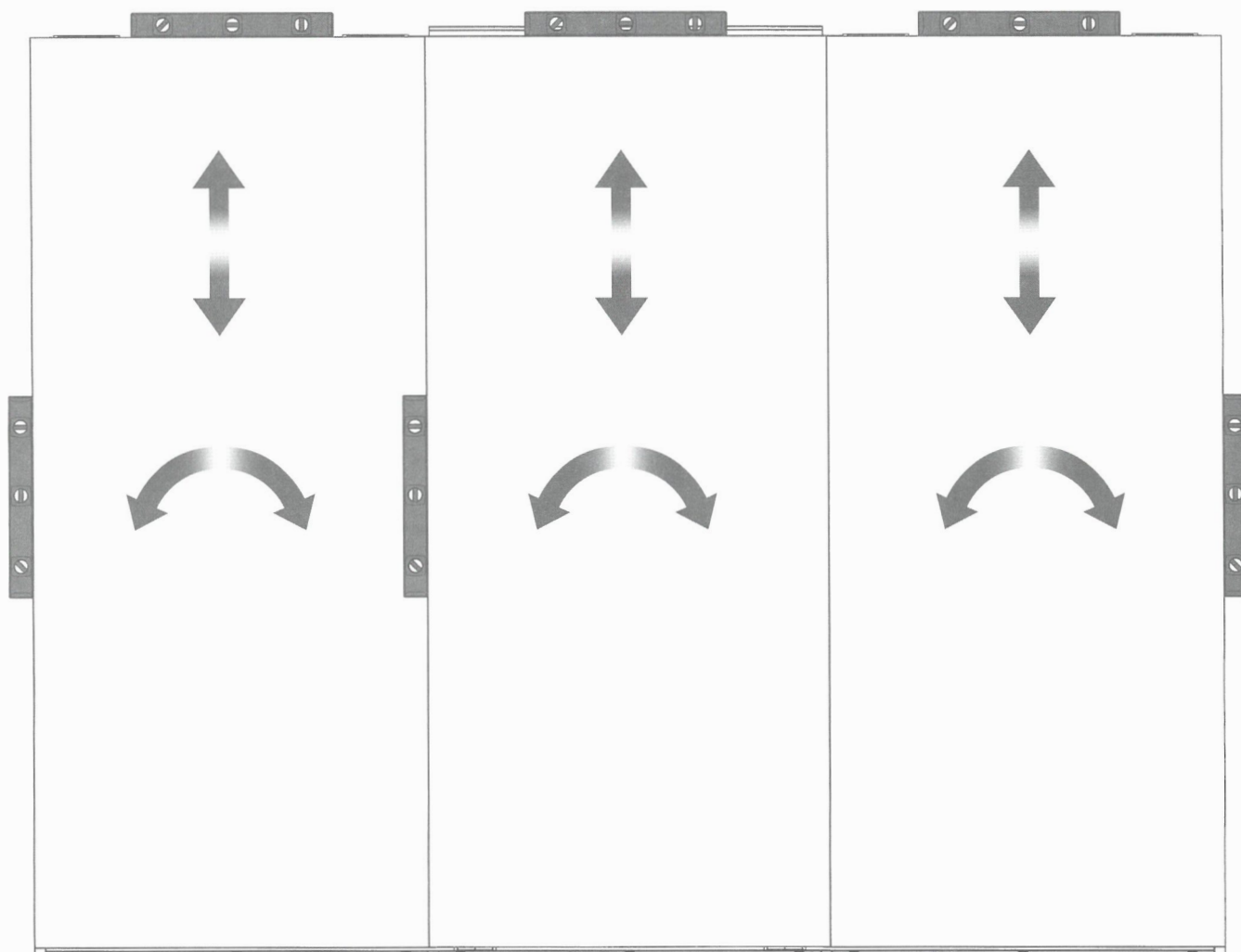
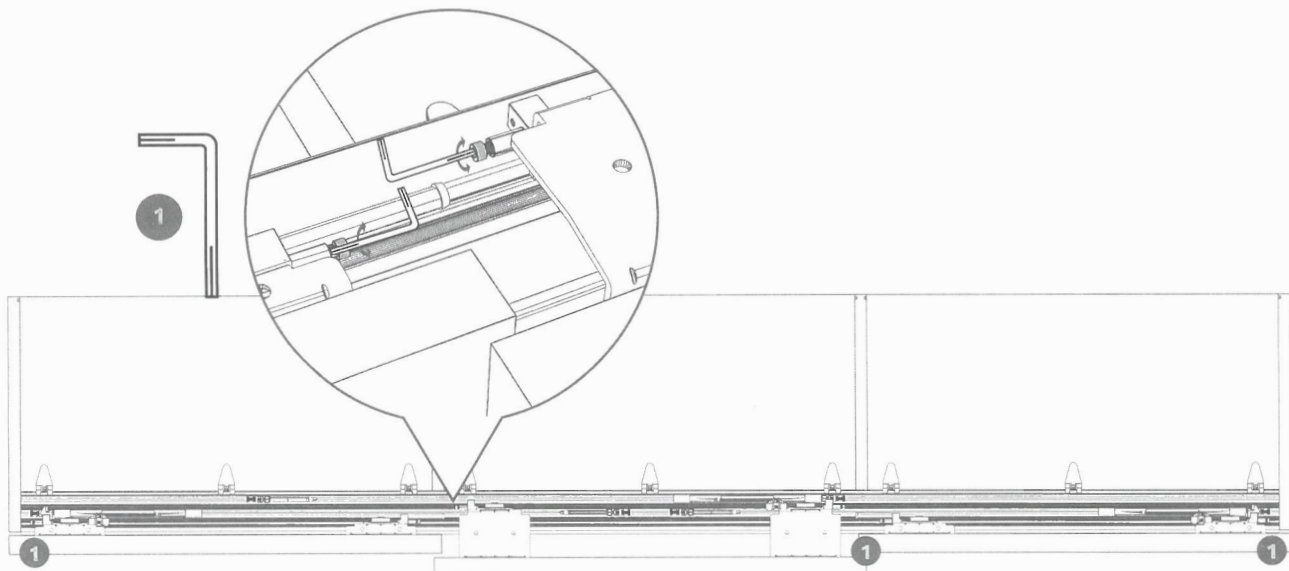


MKC031C 374 CONF.VELCRO X CARTER PARAP

[ITA] REGOLAZIONE VERTICALE DELL'ANTA

[ENG] DOOR VERTICAL ADJUSTMENT

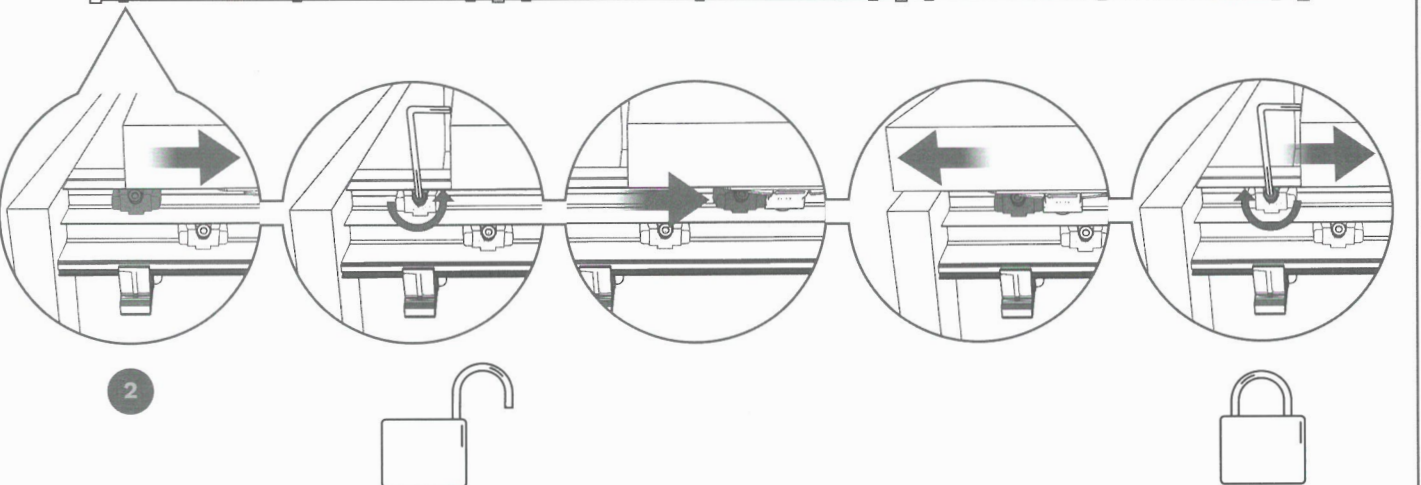
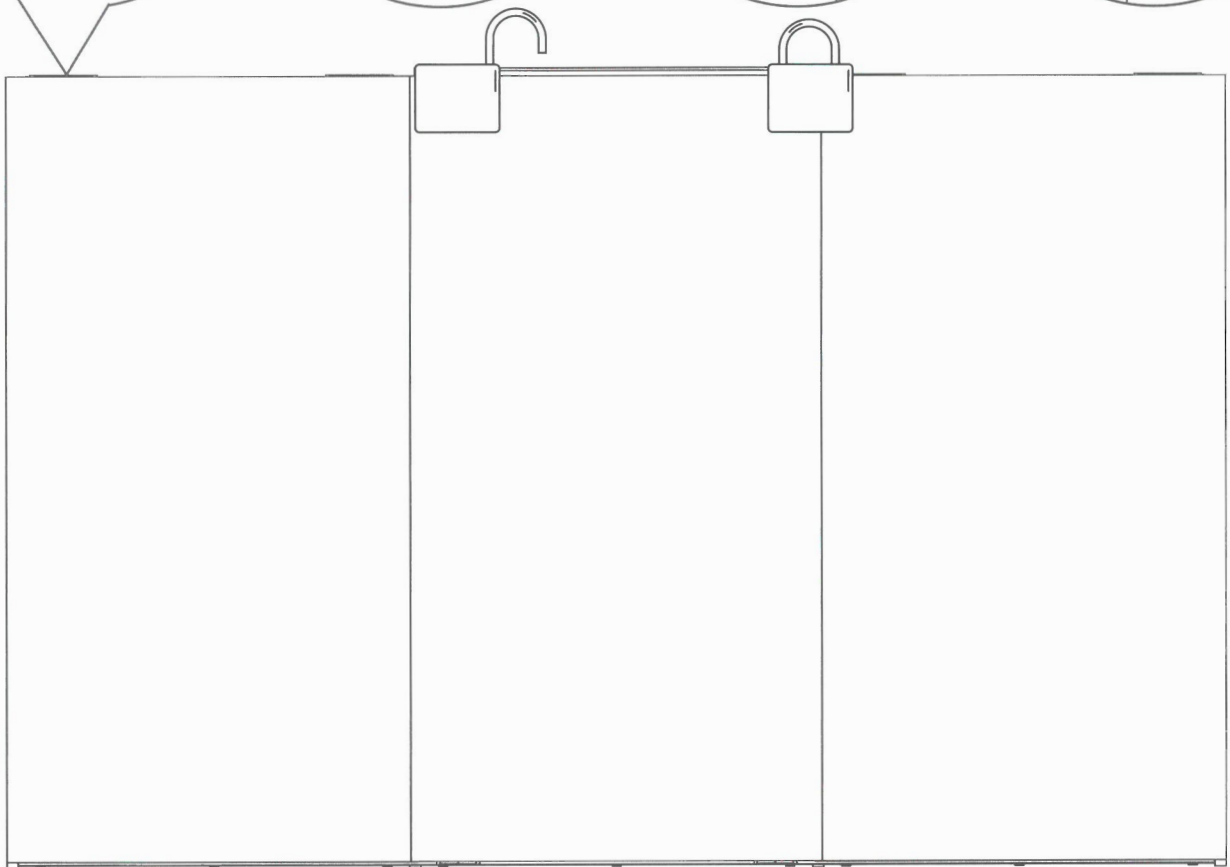
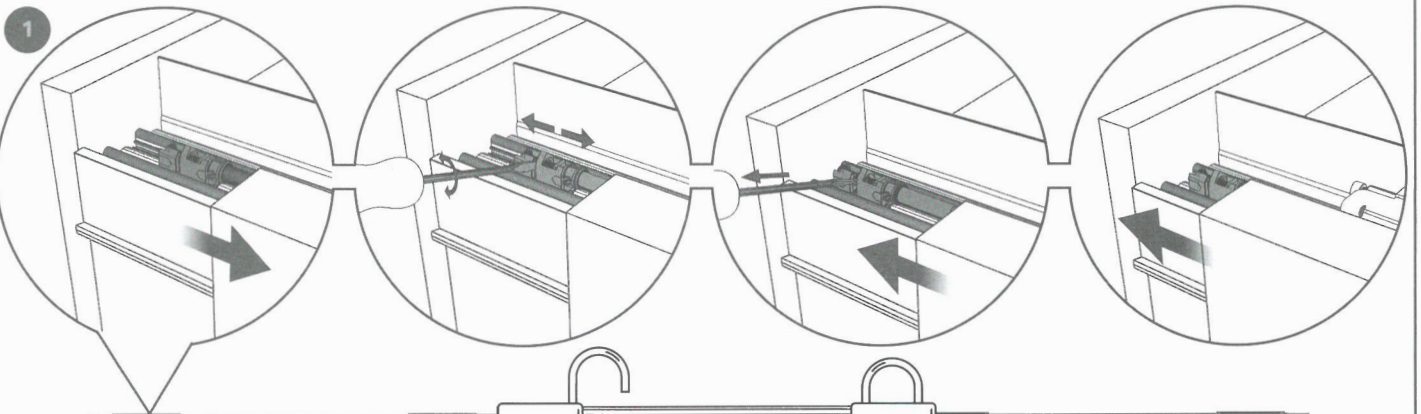
[DEU] VERTIKALE REGULIERUNG DER TÜR



[ITA] REGOLAZIONE ORIZZONTALE DELL'ANTA

[ENG] DOOR HORIZONTAL ADJUSTMENT

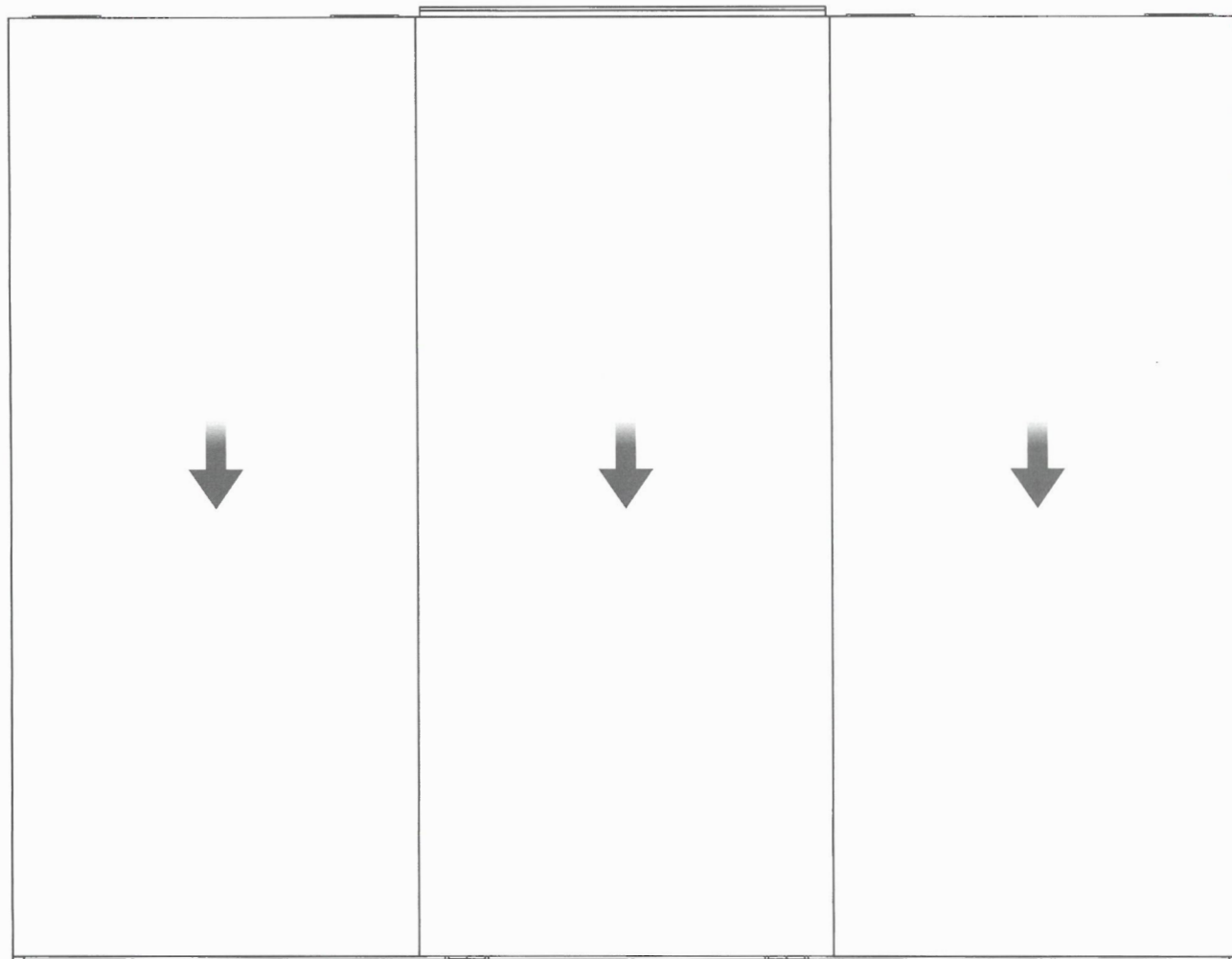
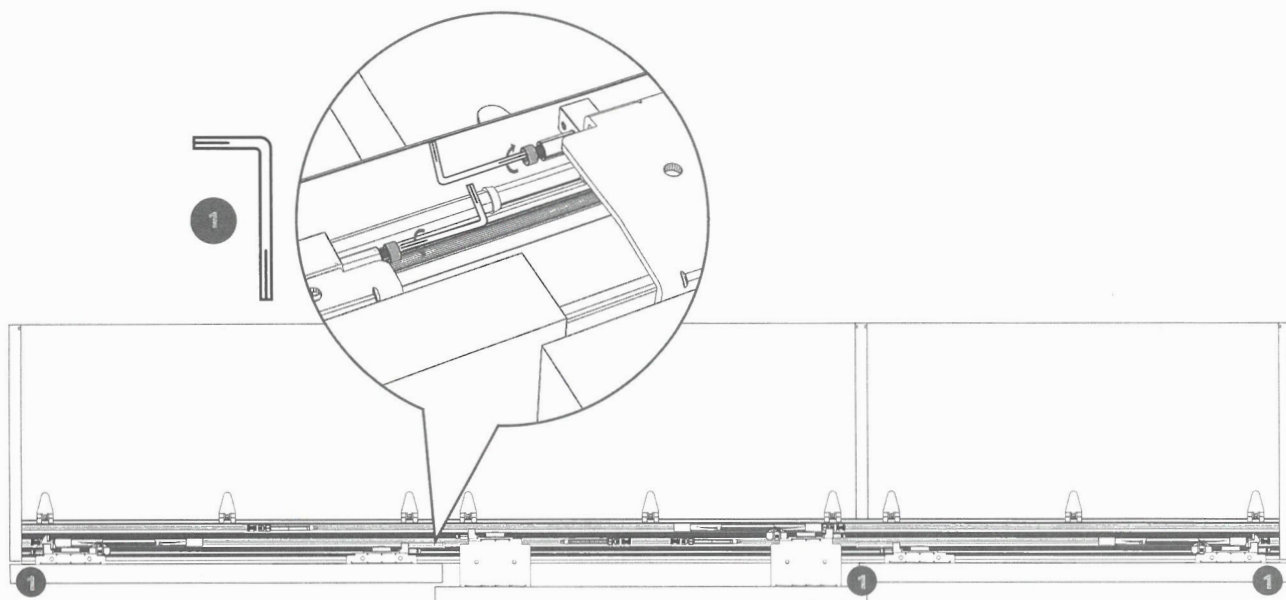
[DEU] HORIZONTALE REGULIERUNG DER TÜR



[ITA] RIMOZIONE DELL'ANTA

[ENG] REMOVING DOOR

[DEU] DEMONTAGE DER TÜR



[ITA] RIMOZIONE DELL'ANTA

[ENG] REMOVING DOOR

[DEU] DEMONTAGE DER TÜR

