

tisca textiles

living  
commercial  
mobility  
sports



TISCA

Tisca Garden Rugs.  
Rugs for Outdoor Living.



Rugs for  
Outdoor Living.

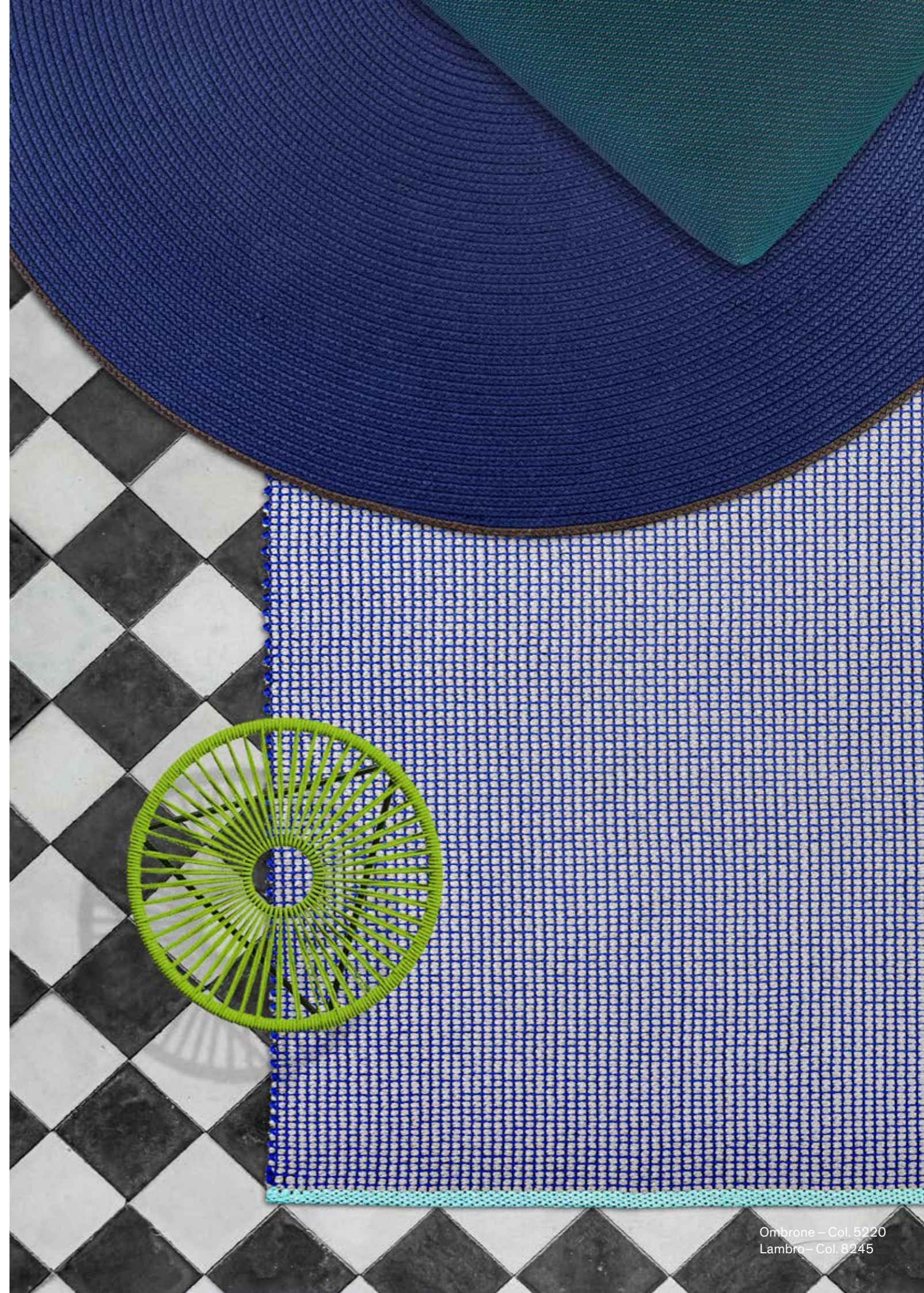


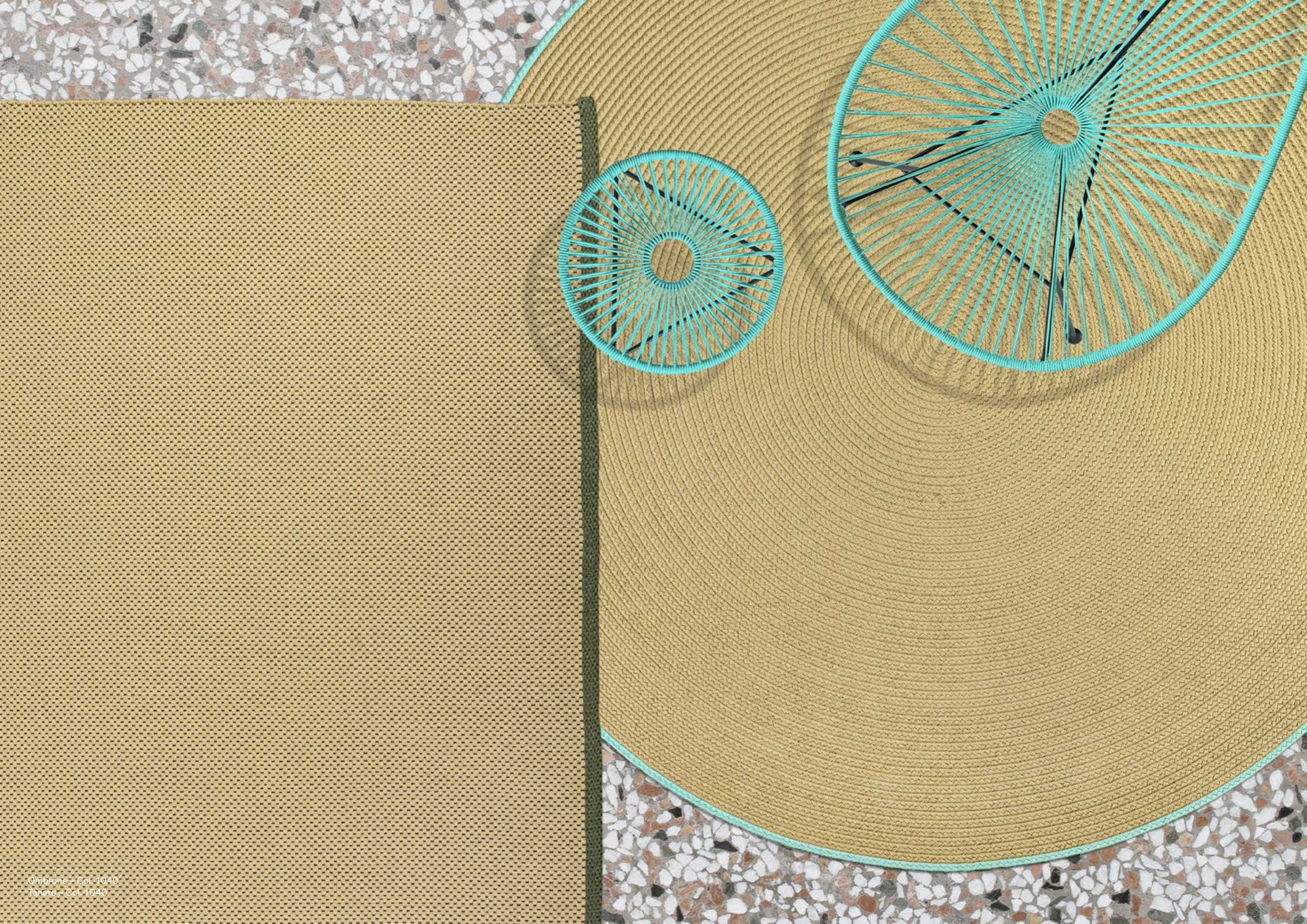
Never has there been a better opportunity to design and seamlessly connect spaces with the same perfectly executed atmosphere.

Just as the colors of nature are incorporated into the design of interior spaces, so too are comfort and homeliness extended into the yard and onto the terrace.

At the core, our curtains and materials are now joined by our hand-woven rugs, which repel dirt and are resistant to light, water, and snow, yet boast an appealing texture that's soft to the touch.

Available in a variety of shapes and designs as well as the colors and patterns typical of high-quality home textiles, they're sure to cut a fine figure both indoors and outside. These eye-catching rugs will maintain their beauty even in the harshest of conditions.





# Tisca Belbo

A round rug, a circle of interwoven braids that appear to loop around endlessly into eternity, a symbol of unity, of perfection.



Belbo – Col. 704

Braids in a single color, joined together from the inside out to form a coherent whole. With eleven colors to choose from (see page 34), you can select the one that speaks to you. Play with concentric circles, sizes, and contrasting colors – for a circular rug that will always seamlessly connect your spaces, radiating a sense of calm and vitality.



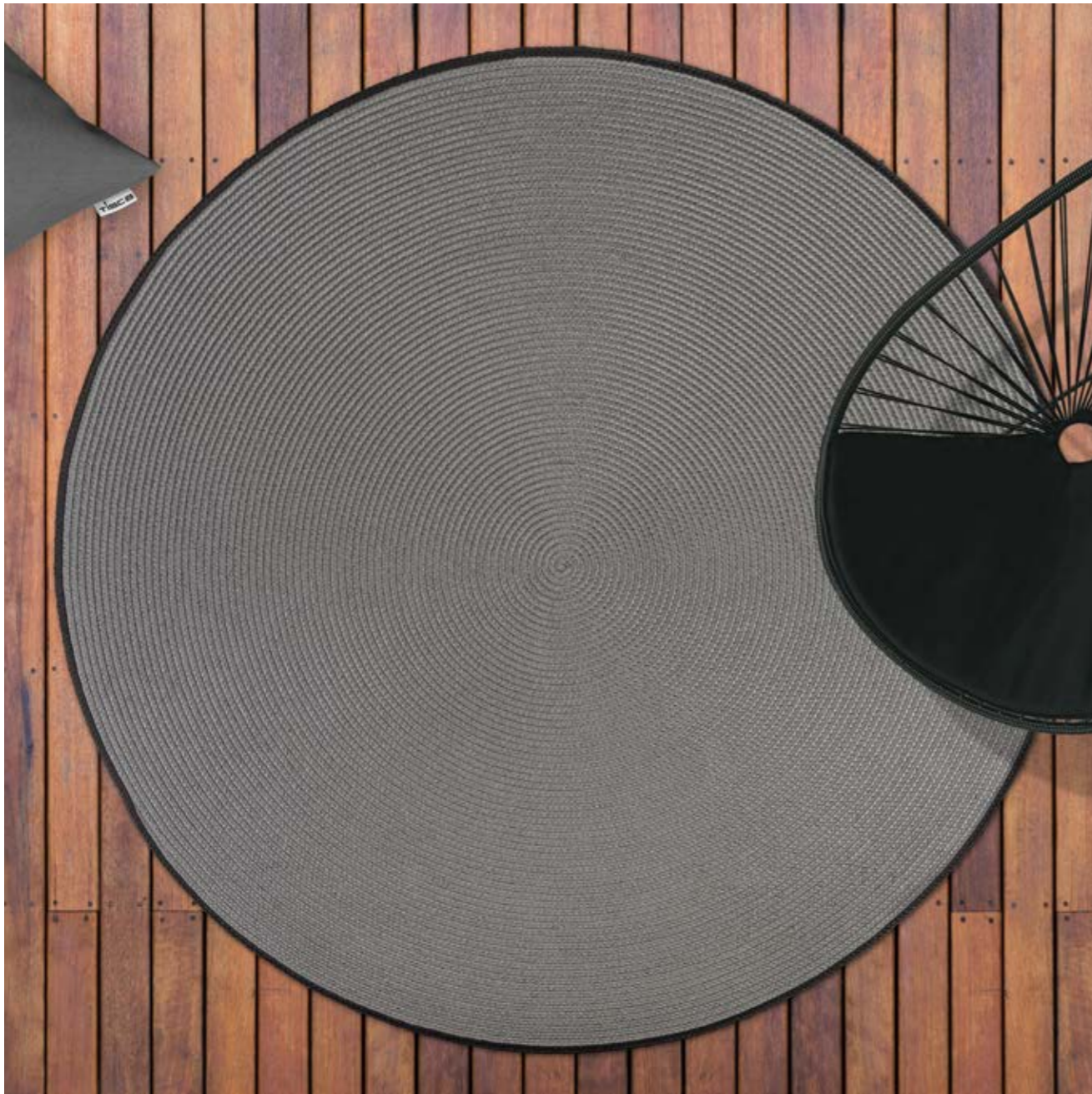
Belbo – Col. 607



Belbo - Col. 710  
Belbo - Col. 511  
Belbo - Col. 803

# Tisca Ombrone

Braids in a single color, joined together from the inside out to form a coherent whole, and concluded with a contrasting color along the outer edge.



Ombone - Col. 8280



Ombone - Col. 1040



Ombone - Col. 2140



Ombone - Col. 2280



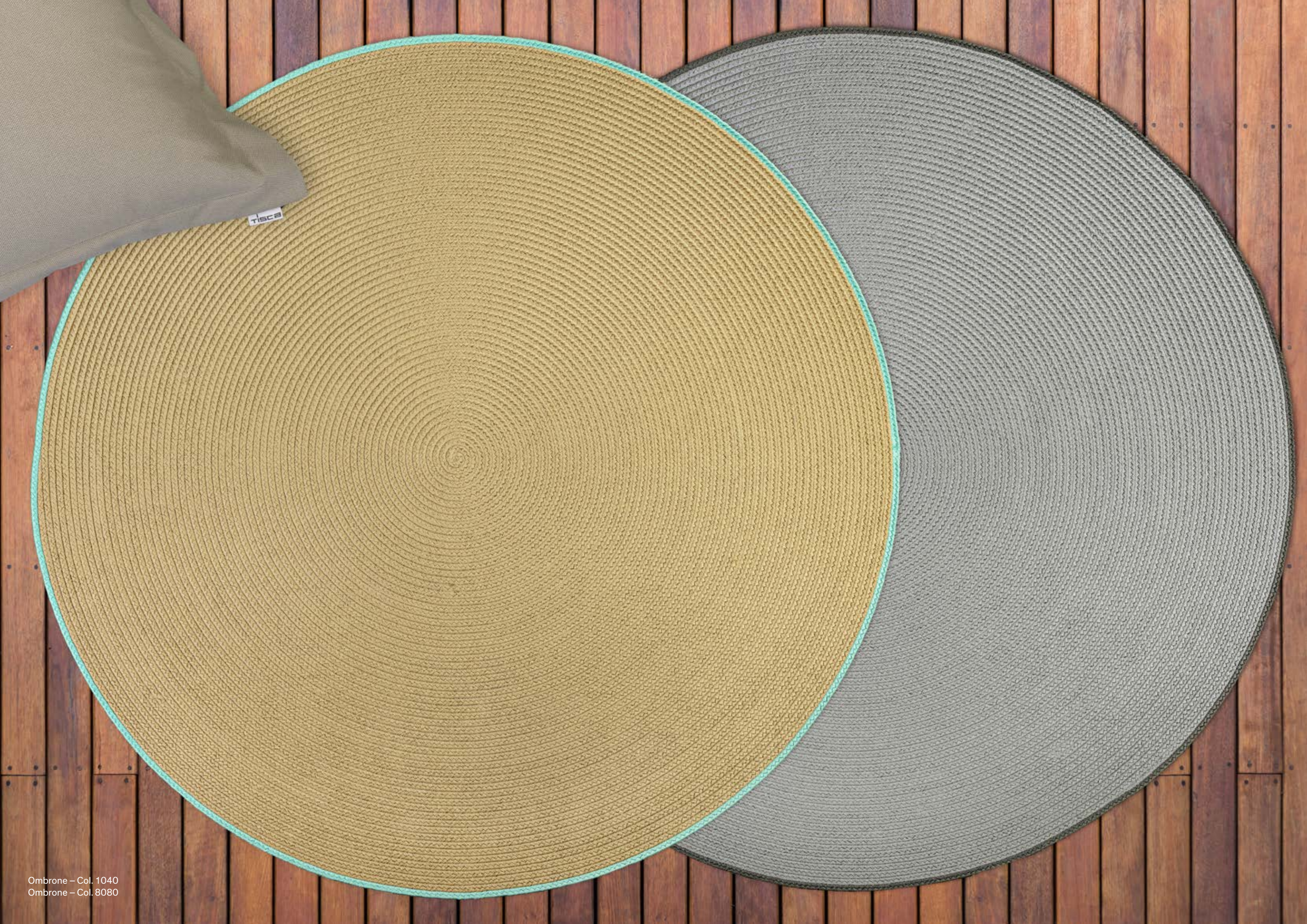
Ombone - Col. 5220



Ombone - Col. 8080



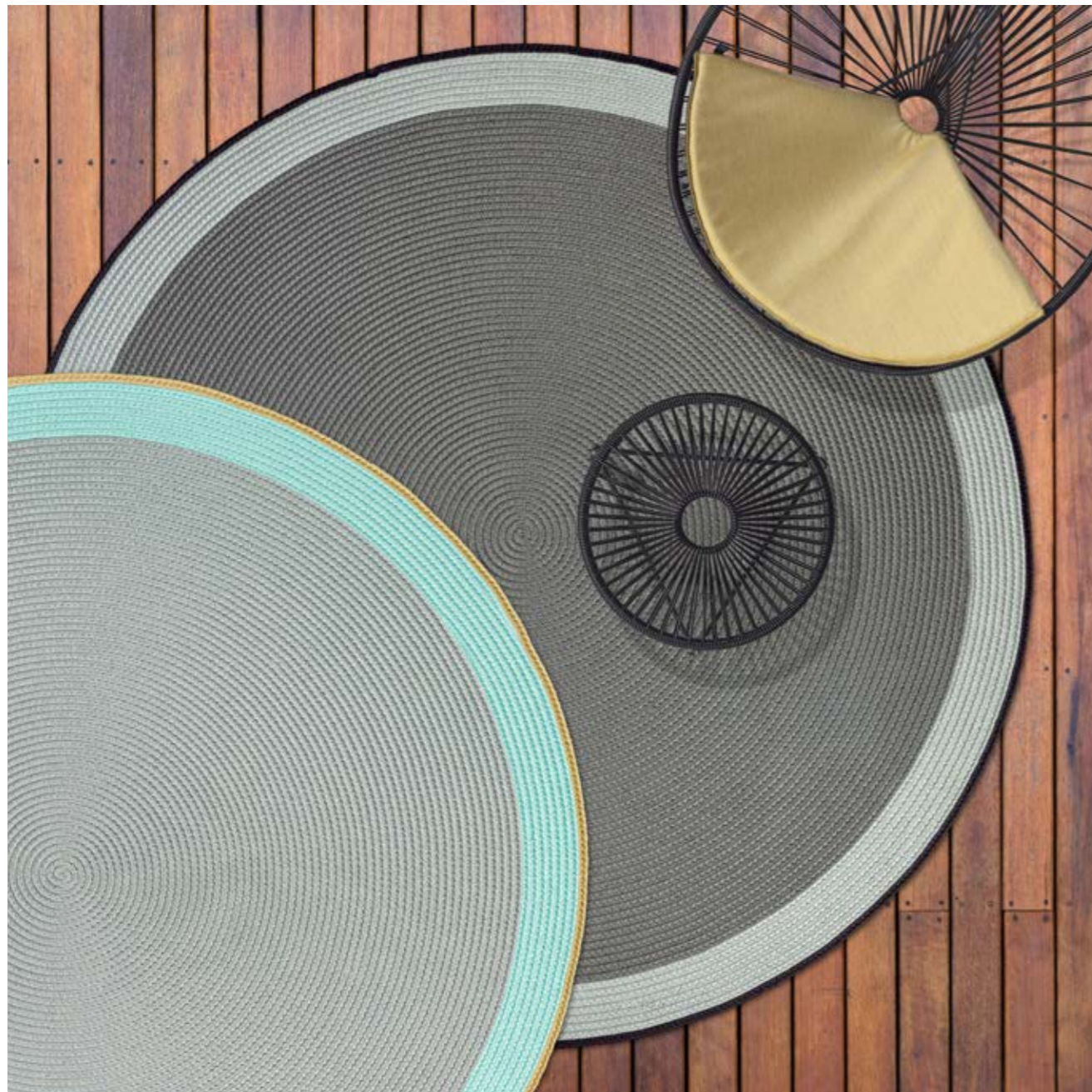
Ombone - Col. 8280



TISCOS

# Tisca Sesia

A large inner circle, a narrow border, and a contrasting edge – with so many options, the sky's the limit.



Sesia – Col. 8041 und Col. 8288



Sesia – Col. 2142



Sesia – Col. 4342



Sesia – Col. 4513



Sesia – Col. 5213



Sesia – Col. 8041



Sesia – Col. 8288



# Tisca Maira

A woven, robust rug, concentric circles in different colors – a thrilling sight to behold.



Maira – Col. 2185



Maira – Col. 4322



Maira – Col. 2185



Maira – Col. 8014



Maira – Col. 8053



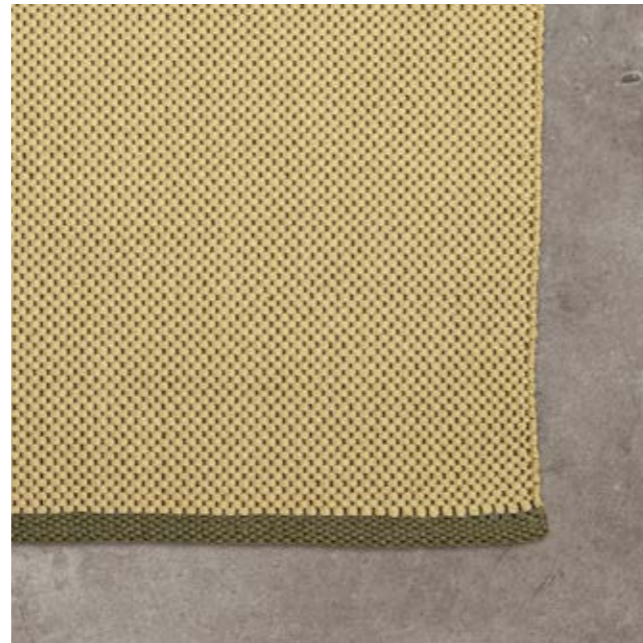
Maira – Col. 8283



TISCA

# Tisca Tanaro

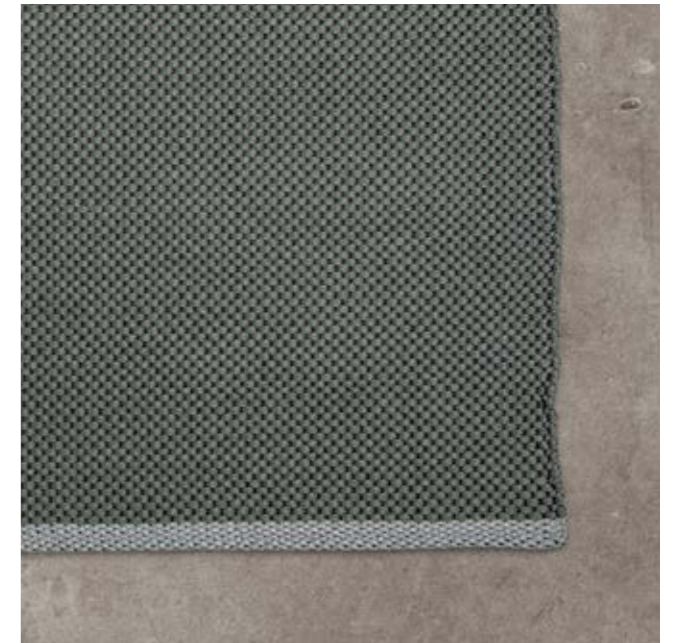
Woven like the Lambro, but with a contrasting edge to lend the Tanaro a sense of excitement and flair. It's not only the borders that are available in contrasting colors. Each side of the rug can have a different color.



Tanaro – Col. 1040



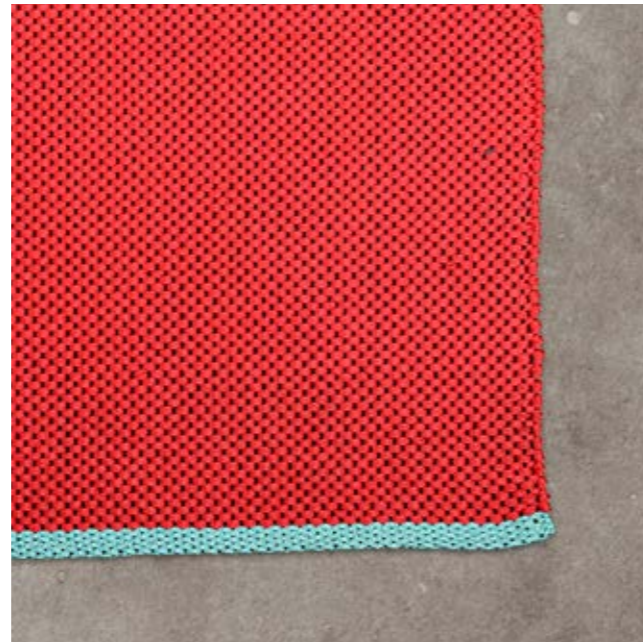
Tanaro – Col. 2280



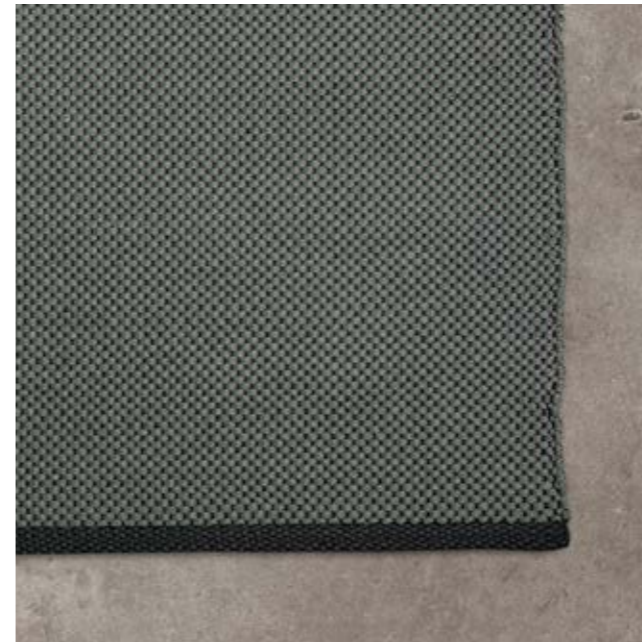
Tanaro – Col. 8280



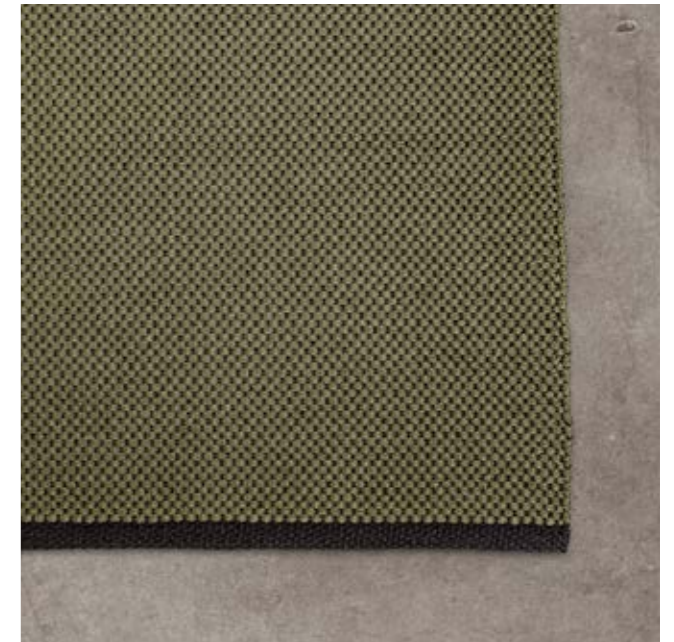
Tanaro – Col. 2250



Tanaro – Col. 3040



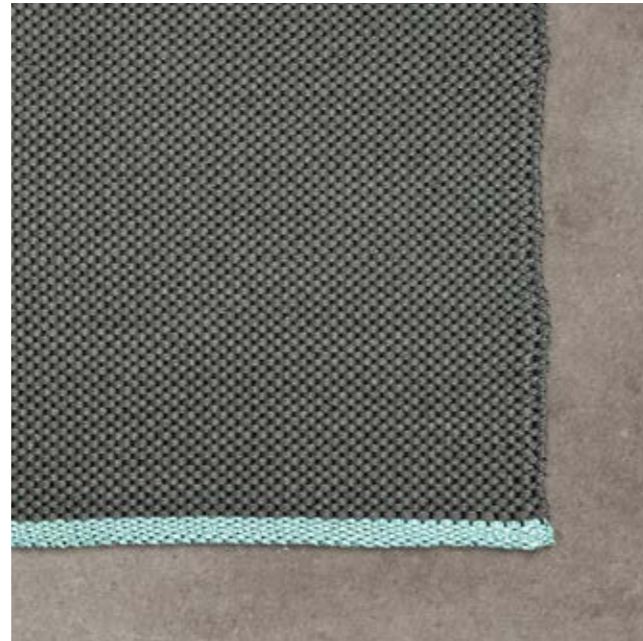
Tanaro – Col. 8288



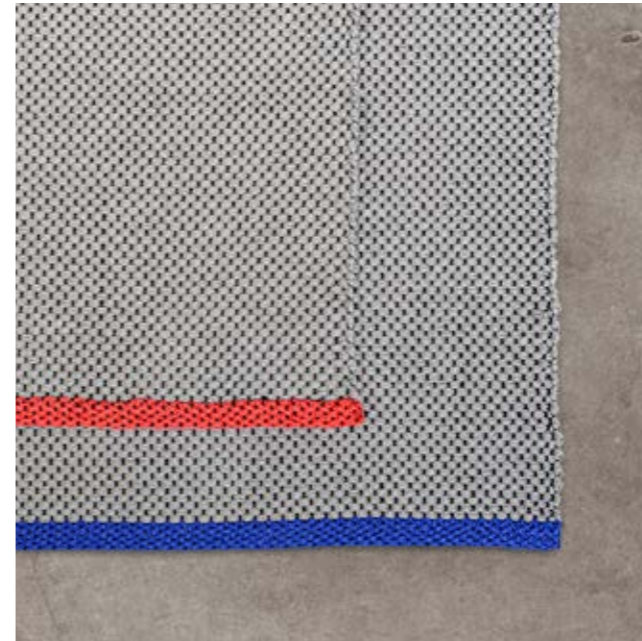
Tanaro – Col. 4352



Tanaro – Col. 5230



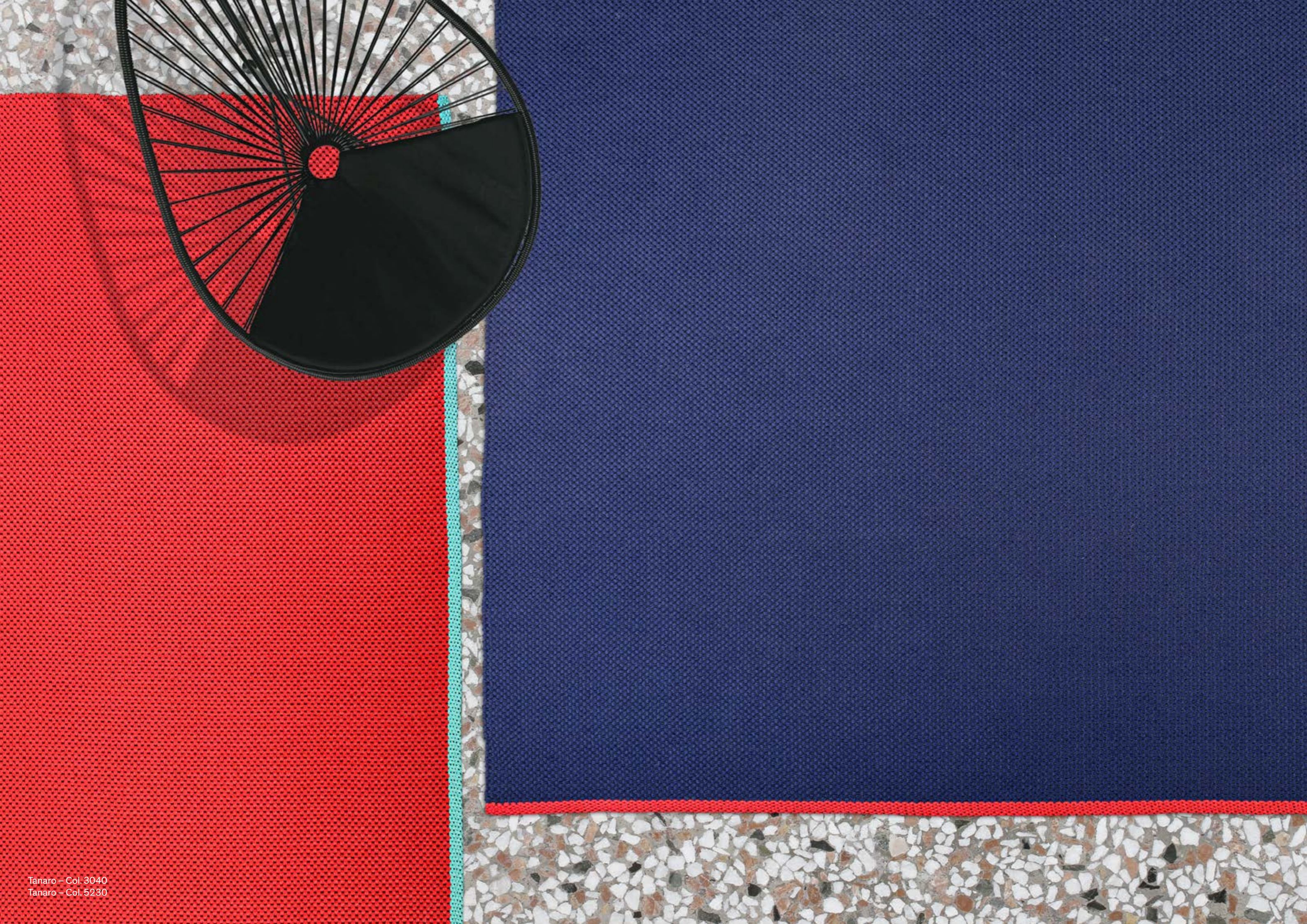
Tanaro – Col. 8240



Tanaro – Col. 8135



Tanaro – Col. 2154



# Tisca Lambro

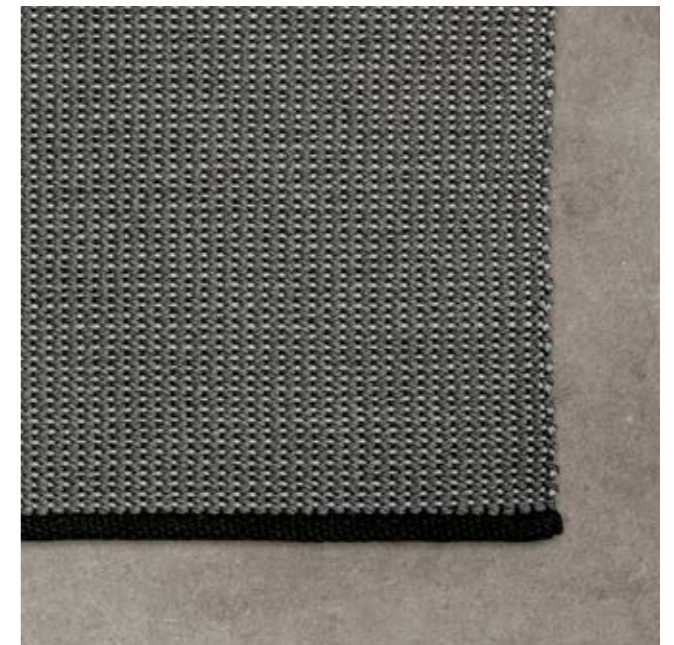
The Lambro owes its beautiful structure to the warp and weft, with their perpendicular directions and different colors. Any color and size is possible.



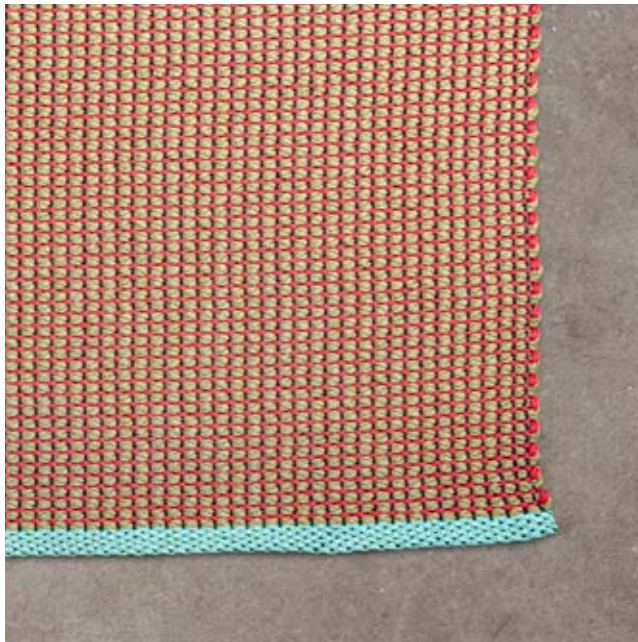
Lambro - Col. 1042



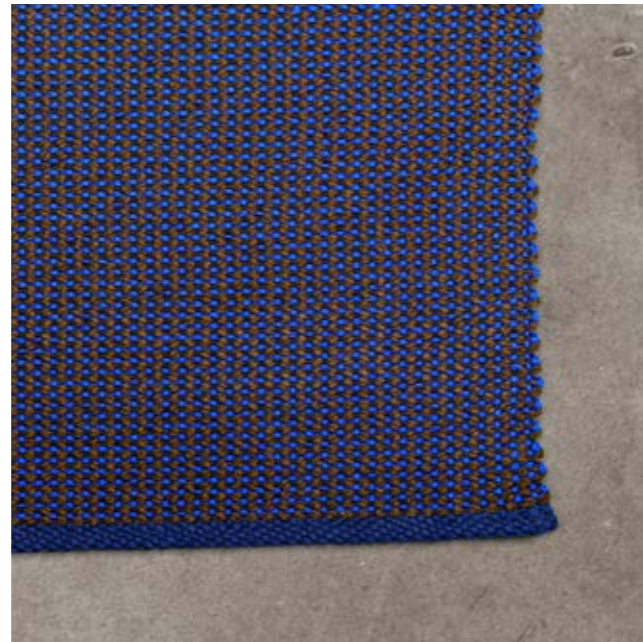
Lambro - Col. 4581



Lambro - Col. 8281



Lambro - Col. 1043



Lambro - Col. 2255



Lambro - Col. 2143



Lambro - Col. 8119



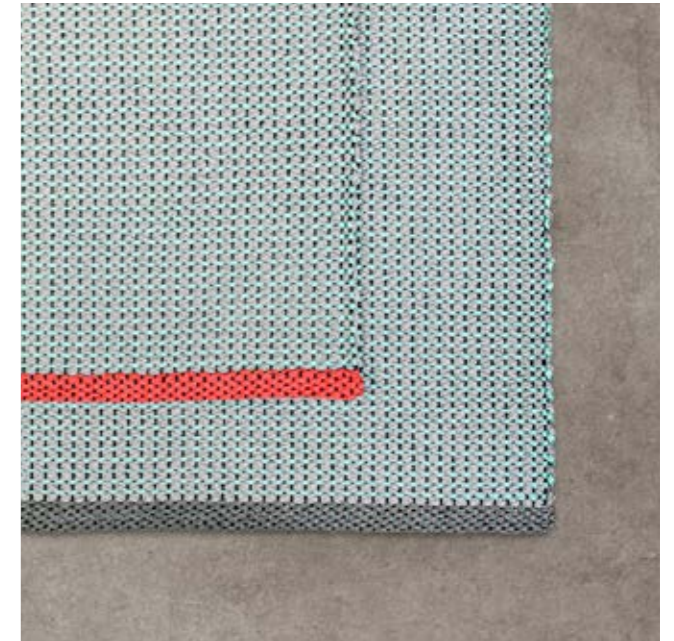
Lambro - Col. 2281



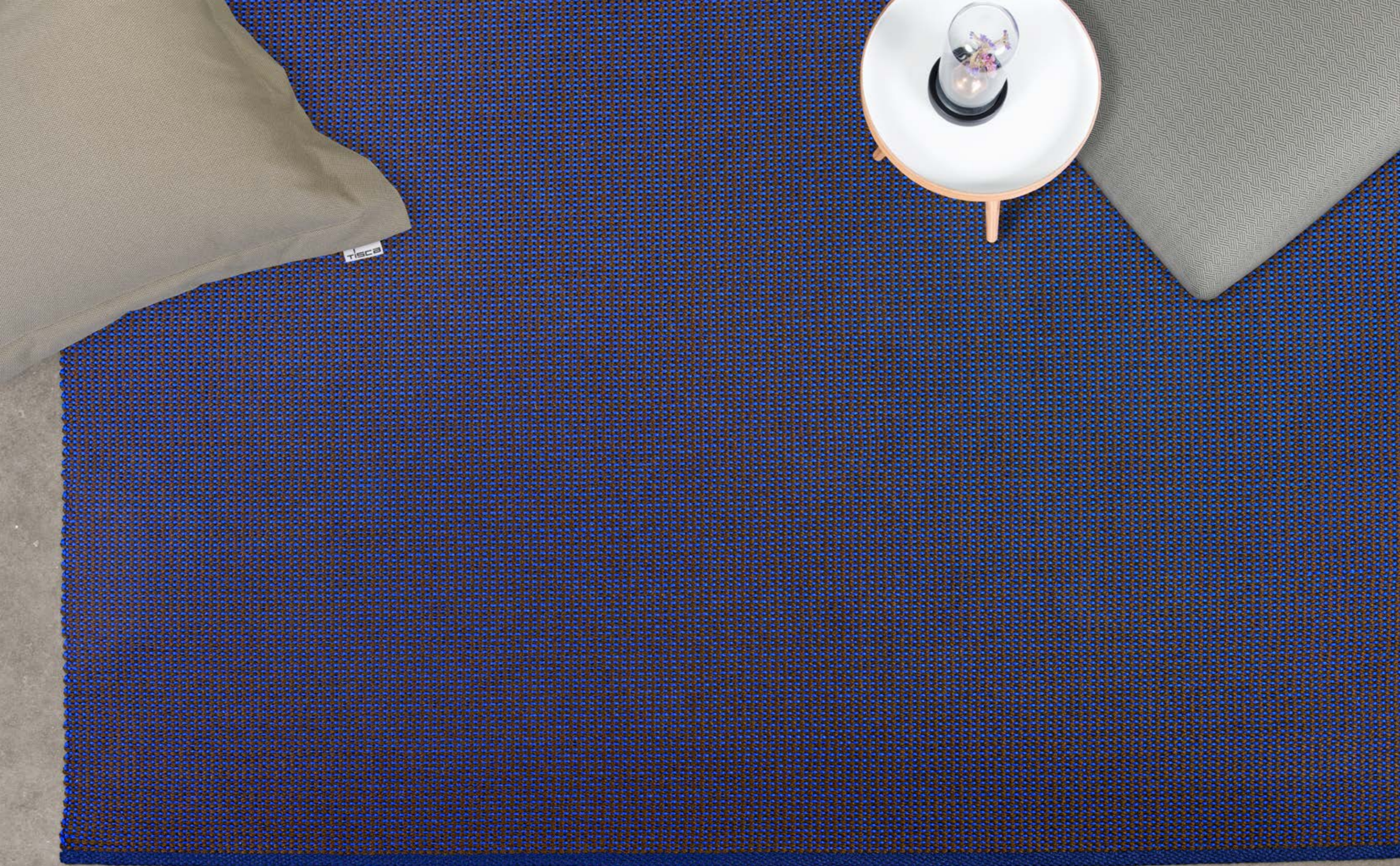
Lambro - Col. 4312

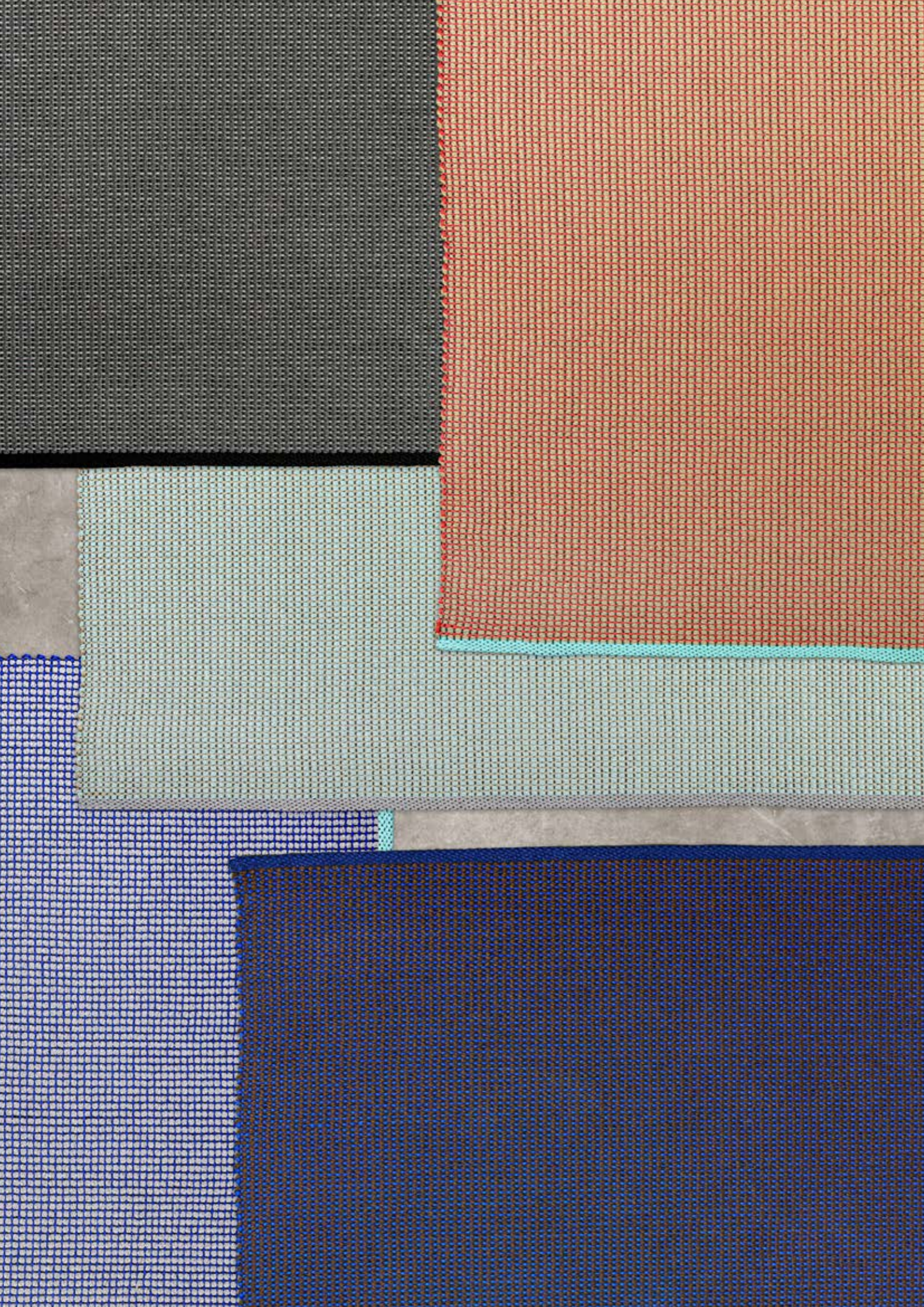


Lambro - Col. 8245



Lambro - Col. 8138

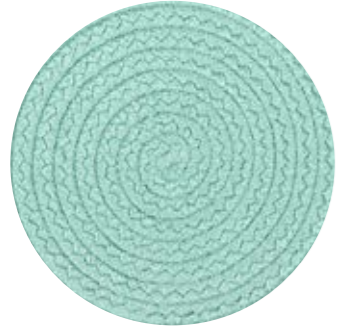




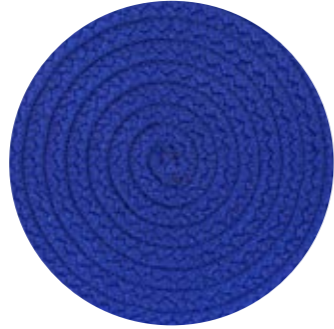
# The Distinguishing Features of Tisca Garden Rugs

|                                |   |
|--------------------------------|---|
| <b>Handmade</b>                | Woven by hand, with the small irregularities that combine to form a harmonious whole and make handcrafted design so exceptional.  |
| <b>Resistant</b>               | Thanks to the permanent UV stabilizers integrated into the material, the rugs are resistant to light and sun  |
| <b>Variable</b>                | Different designs and shapes, round or angular, a variety of standard sizes, and custom sizes are all within the realm of possibility. Colors that complement the Tisca outdoor materials and can be endlessly mixed and matched. |
| <b>Easy to maintain</b>        | Stains can usually be removed entirely.   |
| <b>Manufacturing locations</b> | The idea and design come from Switzerland, while the raw material and yarn are manufactured in Germany, formed into a rope in Switzerland, and woven by hand in Romania.  |

# Round Rugs – Colors



Col. 607



Col. 504



Col. 511



Col. 710



Col. 709



Col. 704



Col. 803



Col. 801



Col. 902



Col. 614



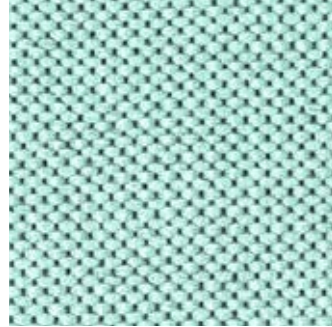
Col. 302

# Design Options for Round Rugs

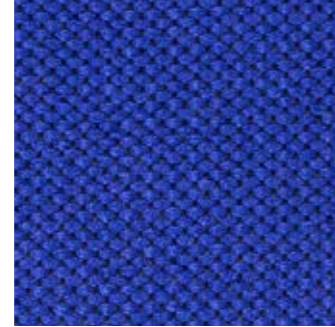
Design your rug and thus the space you live in. Choose the size and determine the volume of concentric circles that adapt to the diameter of the rug within the “golden ratio.” No border, a thin border, a medium or wide border.

Even though we've defined several standard sizes, any of the sizes in between area also a possibility. As are any colors and color combinations. See the dimensions on pages 40 and 41.

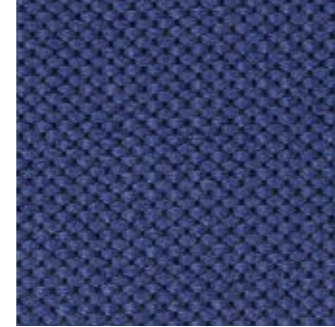
# Tisca Tanaro – Colors



Col. 607



Col. 504



Col. 511



Col. 710



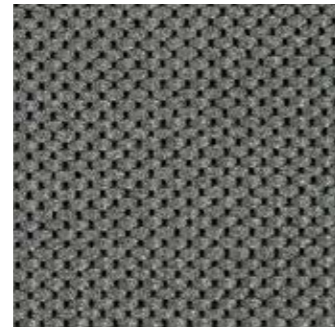
Col. 709



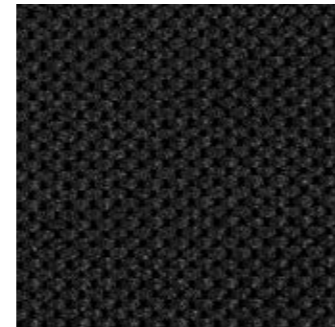
Col. 704



Col. 803



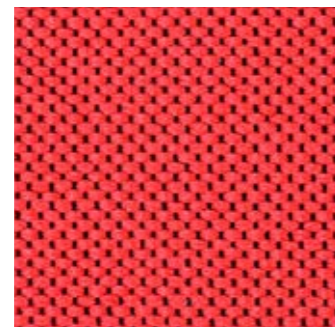
Col. 801



Col. 902

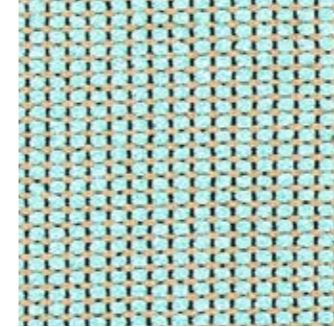


Col. 614

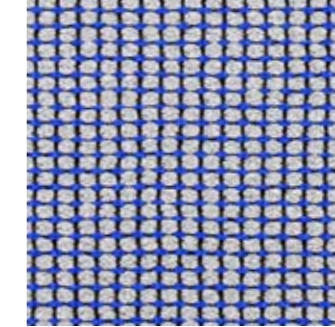


Col. 302

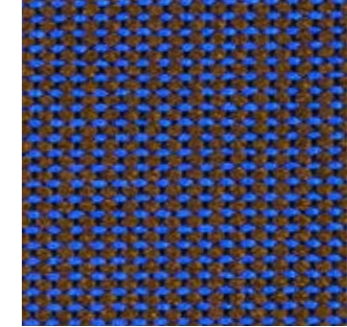
# Tisca Lambro – Colors



Col. 4581



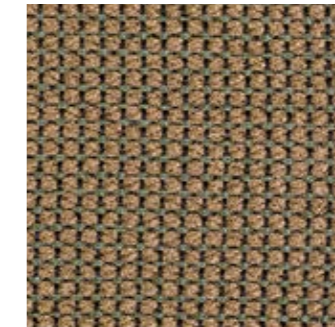
Col. 8245



Col. 2255



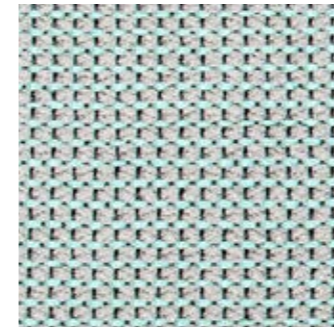
Col. 1042



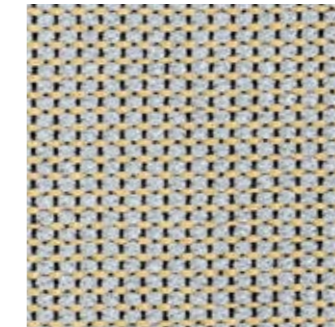
Col. 2143



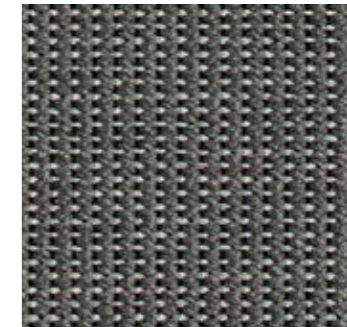
Col. 2281



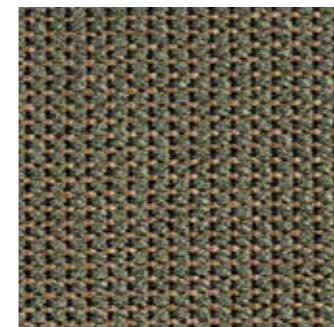
Col. 8138



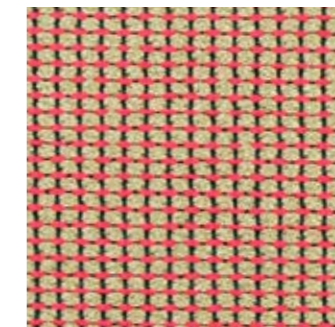
Col. 8119



Col. 8281

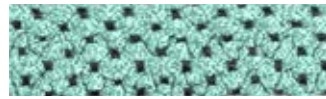


Col. 4312



Col. 1043

# Tisca Lambro and Tanaro Borders – Colors



Col. 607



Col. 504



Col. 511



Col. 710



Col. 709



Col. 704



Col. 803



Col. 801



Col. 902



Col. 614



Col. 302

# Design Options for Tisca Lambro and Tanaro



Here, too, standard sizes and any sizes in between are also a possibility. The colored borders are unique and exciting.

They can come in the same color as the rug itself, in a contrasting color or even in two different colors, one on each of the shorter sides. See the dimensions on page 42.

# Dimensions – Round Rugs

Standard sizes for round rugs:

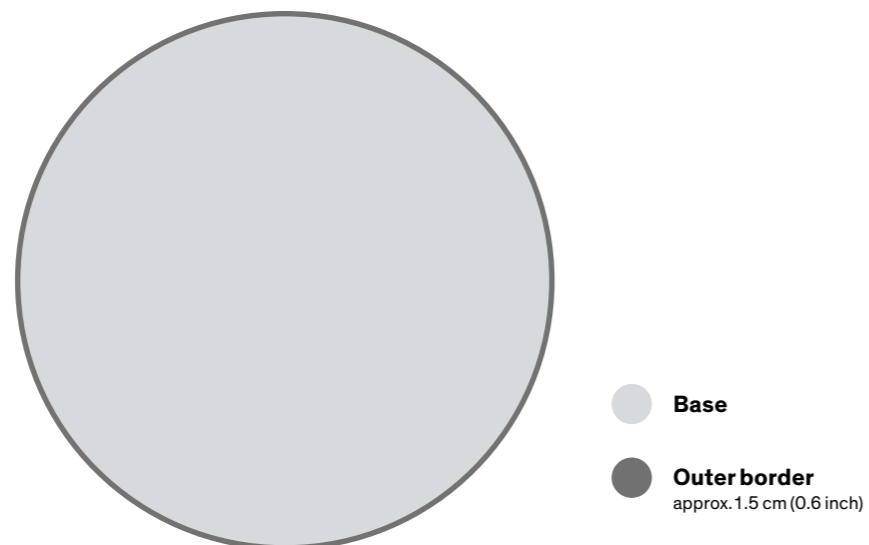
| Ø in cm | Ø in inch |
|---------|-----------|
| 200     | 79        |
| 225     | 88.5      |
| 250     | 98.5      |
| 300     | 118       |
| 350     | 138       |
| 400     | 157.5     |

In addition to the standard sizes, any sizes in between are also available upon request.

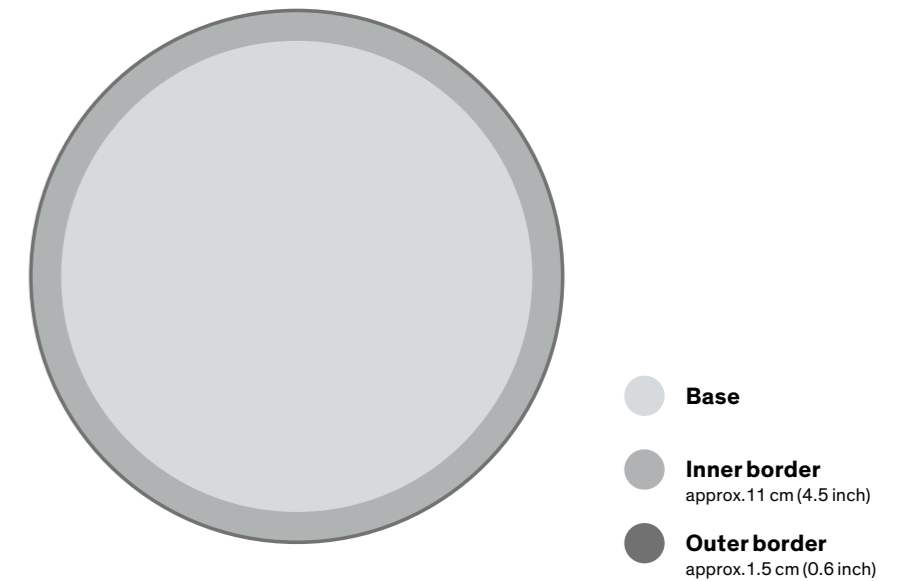
**Tisca Belbo**



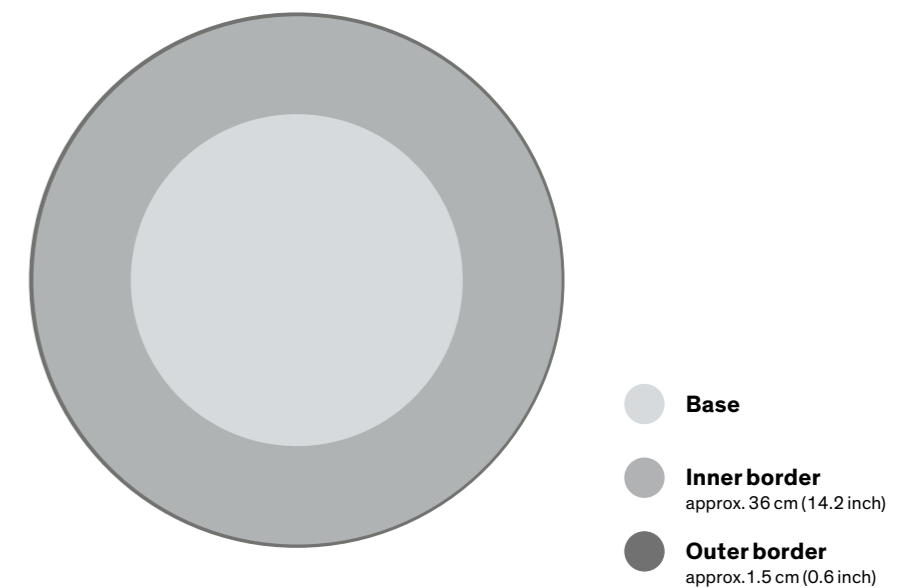
**Tisca Ombrone**



**Tisca Sesia**



**Tisca Maira**



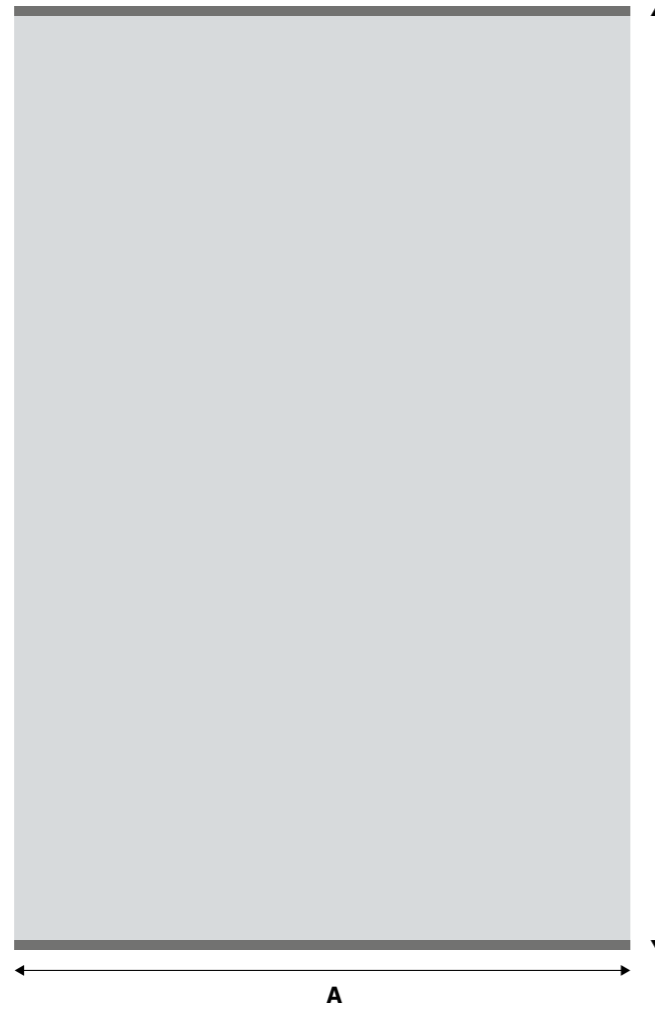
# Dimensions – Rectangular Rugs

Standard sizes for rectangular rugs:

| A × B in cm | A × B in inch |
|-------------|---------------|
| 140 × 200   | 55 × 79       |
| 170 × 240   | 67 × 94.5     |
| 200 × 250   | 79 × 98.5     |
| 200 × 300   | 79 × 118      |
| 250 × 300   | 98.5 × 118    |
| 250 × 350   | 98.5 × 138    |
| 300 × 400   | 118 × 157.5   |

In addition to the standard sizes, any sizes in between are also available upon request.

**Tisca Lambro**  
**Tisca Tanaro**



**B**

- Base**
- Outer border**  
approx. 2-3 cm  
(0.85-1.2 inch)

**A**





# Care Instructions

## Removing coarse dirt

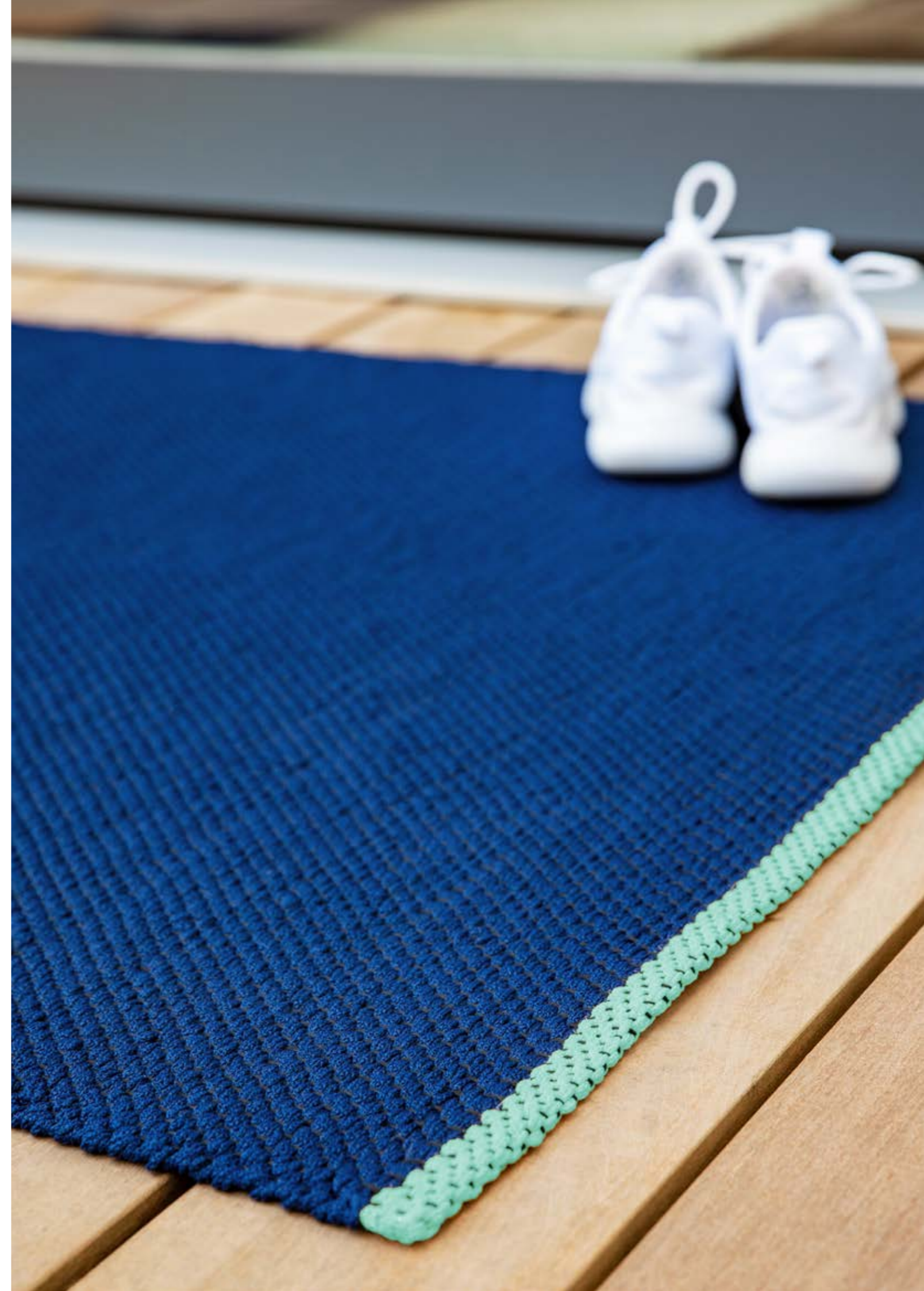
- Brush off any loose dirt
- Spray dirt with cleaning solution containing water and mild soap
- Clean using a brush with soft bristles
- Allow cleaning solution to soak
- Rinse out any remaining soap
- Allow rug to air-dry

# Tisca Garden Rugs

## Technical Data

|                      |                                     |  |
|----------------------|-------------------------------------|--|
| Application          | Living                              |  |
| Items                | Round rugs                          | Tisca Belbo, Tisca Ombrone, Tisca Sesia, Tisca Maira |
|                      | Angular rugs                        | Tisca Tanaro, Tisca Lambro                           |
| Construction         | Round rugs                          | braided  |
|                      | Angular rugs                        | hand-woven   |
| Composition          | 100% MFP                            | with UV protection                                   |
| Method of dyeing     | Spinneret                           |  |
| Total weight         | Tisca Lambro                        | Approx. 1,500 - 1,700 g/m <sup>2</sup>               |
|                      | Tisca Tanaro                        | Approx. 1,600 - 1,800 g/m <sup>2</sup>               |
|                      | Round rugs                          | Approx. 2,100 - 2,300 g/m <sup>2</sup>               |
| Total thickness      | Tisca Lambro                        | Approx. 5.8 mm (0.23 inch)                           |
|                      | Tisca Tanaro                        | Approx. 7.6 mm (0.3 inch)                            |
|                      | Round rugs                          | Approx. 7.6 mm (0.3 inch)                            |
| Fading               | 7 - 8                               |  |
| UV resistance        | ISO 105-BA                          |  |
| Saltwater resistance | DIN EN ISO 105-E02:2013; Note 4     |  |
| Chlorine resistance  | DIN EN ISO 105-E03:2010; Note 4 - 5 |  |
| Flame-retardant      | No                                  |  |

Created: July 1, 2021 | Subject to change due to technical progress.







## Tisca Garden Curtains & Fabrics

The lines between indoor and outdoor spaces are increasingly blurring: just as the diversity and colors of nature are incorporated into the design of living and working spaces, so too are comfort and homeliness extended into the yard and onto the terrace.

Flooring, materials, and curtains shape the world to create a consistent atmosphere both inside and out, with plenty of air and space to breathe as well as new opportunities to express yourself and adapt the environment to your tastes.



# Tisca Garden Curtains & Fabrics

As the inside and outside melt together, textiles need to be able to fulfill a new range of requirements. Materials, curtains, and flooring should be soft and pleasant to the touch, and boast elegant patterns and colors. But they should also withstand the sun, snow, and rain, dry quickly, and be easy to clean for years to come – a combination of characteristics that had never been achieved in the market. But these are exactly the characteristics of the Tisca garden collections.

We've combined our expertise in the manufacture of sports surfaces with our sense of style and valuable experience in developing and producing high-quality home textiles to create materials, curtains, and flooring with new capabilities. Textiles that enable living in the open air and thus provide the opportunity to design a consistent living environment that flows from the inside to the outside.





Tisca is a Swiss company that has dedicated itself to further developing textiles and using the possibilities they provide to transform spaces into living spaces.

The company employs around 400 people, produces most of its products in Switzerland, and can offer carpets, curtains, upholstery fabrics, and other textiles for just about any application, thanks to its vast product range and extremely flexible production capabilities.



# TISCA

tisca